



THE FLYFISHER NEWSLETTER

April 2022

IN THIS ISSUE

Page 1 -	Presidents Report
Page 2 -	Fishing Report
Page 4 -	What's Happening – Club Nights / Events
Page 7 -	Club Trips
Page 10 -	Auckland / Waikato Reel Life - April
Page 12 -	Eastern fish And Game Reel Life – April
Page 14 -	Chris Dore's Five Late Season Fly Fishing Tips
Page 16 -	Fish-Friendly Pump Marks Milestone In Fish Passage Journey
Page 18 -	Targeting Big Taupo Browns
Page 20 -	Editor's Note
Page 21 -	General Club Information Plus Committee Members Contact Details

PRESIDENT'S REPORT

PRESIDENT'S REPORT FOR 2021/2022 YEAR.

Thanks to the Covid19 pandemic, the past year has been one of “stop/start” with most of our scheduled club activities falling victim to lockdowns and traffic lights. Our monthly meetings, both club and committee, have been able to continue “on-line” but like everyone, I am looking forward to when we can all once again meet in person.

Some of our members have enjoyed the odd spot of fishing while exercising sensible health precautions and Facebook postings have carried images of successful trips, both fresh and

saltwater. With any luck, the current limitations, at least within Auckland, may ease shortly, just in time for spawning season.

Our club continues to enjoy a very good state of administrative and financial health, thanks in no small part to the tireless work of our Treasurer, Barrie Barnes. Barrie's IT skills and legal knowledge, have kept our club affairs in top shape including the website. My sincere thanks to you Barrie and also the remaining committee members; Duncan Frew, Mike Martindale, Simon Hoole, Maurice Parlane and Pawel Mikolajczyk.

While the AGM this year will be on-line, we are all hopeful that a return to the Birkenhead RSA is not too far away and with any luck, a get together celebrating the delayed Christmas function.

In the meantime, thank you to everyone for your contributions to our club, whether large or small, they are all meaningful and help to cement the goodwill and camaraderie of North Shore Fly Fishers.

David Symes
President.

FISHING REPORT

Auckland / Waikato

Recent reports from Members fishing the Waikato area have been good. The fish are spooky in the low and clear conditions but they are in great condition and putting up a great fight when hooked, and are still 'looking up'. This recent rain should freshen things up again down there, drop the water temperatures, put a little colour into the water and flush some more food down into the trout's feed zone. Get out there.

Rotorua

Kerry, our roving Tauranga based reporter has been fishing the Rotorua tributaries fairly regularly and his latest report suggests it has turned a bit of a corner down there. He had been getting fish but having to work hard for them. Last week he hooked into a dozen in around 4 hours before he had to head back to pick up the grand kids from school. Fly of choice, Glo Bug. It sounds like there has been a decent run and this rain can only induce more fish to head upriver. Things are looking good for the Club Trip in May!

Taupo

A recent weekend to Lake Otamangakau was a complete bust as far as the fishing was concerned. John C. and I headed down on the Thursday and it was too windy to even launch. The Friday was marginally better and the Saturday gave us 20 minutes of calm

before the gale force winds picked up and eventually drove all the other, more sensible, boats off the water. The outlet to the Lake is closed meaning that any water coming in through the Whakapapa inlet is immediately fed back through the dam to the Whakapapa River. The end result is an almost stagnant Lake with almost no visible fish life and quite a dark colour. Still the company was excellent and plenty of laughs were had!

As can be seen in a later article, Turangi Guide Brian Willson has been targeting the river mouths and doing well, and our own Garry Roberts reports that he ran into some early running fish in the rivers when down there a week or so ago. It could just be an early season...

Saltwater

There is a veritable smorgasbord of fish available out there right now. Russell headed out there recently and was surrounded by Snapper, Kahawai, Trevally and even the odd Kingi. He had a ball with his fly rod, and while his mate fished with bait all the biggest fish were taken by Russell on the fly.



Just one of the Snapper Russell got in shallow water. The best fly was the pink and white clouser pattern fished on a mid-speed retrieve. Photo courtesy of Russell Nellson.

Fishy Tales

- If you do have a report, success story, or anecdote to share then just send it to iconpromote@gmail.com . Happy Fishing and Tight Lines – Freddy Da Fish.

LAST CLUB NIGHT

Last month we had an online Meeting due to the Omicron breakout.

NEXT CLUB NIGHT – 19th APRIL 7.30 PM

Due to the current Omicron outbreak this month's AGM Club Meeting will be an online affair again.

Full details of the Meeting, including a link and a password will be emailed out to everyone soon.

WHY WE FISH

. . . . Not everything about fishing is noble and reasonable and sane. Fishing is not an escape from life, but often a deeper immersion into it, all of it, the good and the awful, the joyous and the miserable, the comic, the embarrassing, the tragic, and the sorrowful.

Harry Middleton - Rivers of Memory 1993

CHANGES TO CONTACT DETAILS

Committee members organising club trips and similar events are finding that the phone and email information that we hold for some members has become out of date. If you have changed your address, landline number, mobile number or email address in the last year or so and have not passed the new details on to NSFF, could you please advise Barrie Barnes by email, his email address is barrie@flyfishinginxs.kiwi .

FISHING BUDDIES SOUGHT

The intention is to display a list of names of Club Members that are keen on finding a 'buddy' to go fishing with, either on a regular basis or just for a day. In essence it's a fly-fishing dating service...

Name	Availability	Contact Details
Ron Blair	Anytime, has a 14.4 Marco with 60hp etec Evenrude for serious fishing Salt or Fresh	home 09 834 8841 mobile 0275 006 336 ron.blair@xtra.co.nz
Les Rose	Retired and is happy to take another person fishing during the week.	home 09 4183634
Graham Carter	Lives in Hamilton, keen on weekday / mid-week trips.	021 026 00437 07 855 1833
Lloyd Altham	Has 12' Pontoon boat /15 HP Honda. Available most time, but prefer weekdays.	Mob. 021 0295 9167 Home 09 420 3120 email-lloyd@skysupply.co.nz
Gary Bolstad	Keen to get out Stream, Lake or even Saltwater fly-fishing. Has both Fish & Game and Taupo season licences so keen to go almost anywhere. Retired so free to go most of the time.	Mobile 022 379 3070 gd.bolstad@gmail.com
Derek Robinson	Retired available most times keen to do Waikato streams and most other things.	Ph 4437311 Mob: 0212 595 371 pamanddek@outlook.com

CLUB TROPHIES

Brown Trout Trophy – This is awarded to The Heaviest Brown Trout caught by a Club Member during the year – May 1st to 30th April. Current holder is **Fikrit Chinassi**.

Chain Snore Trophy – A fun award given immediately after any Club Trip to the person who has done the 'funniest' thing over the weekend. If nobody has had anything like this happen it may be awarded to the worst snorer.

Ian Hunt Memorial Trophy – Heaviest Trout caught fly-fishing by a Club Member during the Pupuke Challenge Competition. A competition run every year to promote the Lake Pupuke fishery. This was not held this year due to Covid lock down. Current holder is **Lucas Bathurst**.

I Love Flyfishing Trophy – Awarded to the Club Member who has caught the most species of Saltwater fish fly-fishing over the year – 1st May to 30th April. Current holder is **Russell Nelson**.

Rodd And Gunn Trophy – This is the Club Competition which takes place over two days. One Day on a Lake and one day on a River. Current holder is **Johan Kok**.

The Lake part of the competition has its own Trophy, the **I Love Flyfishing Stillwater Trophy**. Current holder is **Meinrad Roehrs**.

QUOTABLE QUOTES

Why so many of us fly fishermen have felt, for so long, comfortable with our incompetence, I don't know - unless it's because when we try to learn and can't, we feel like three-thumbed imbeciles - so we don't try and are insulated from possible failure. Or perhaps we think of fly fishing as merely a 'poetic' leisure sport, and of practice as too much like work.

Nick Lyons - Confessions of a Fly Fishing Addict

“BROWN TROUT TROPHY” COMPETITION RULES

Winning fish will be determined by weight.
Verification by partner where possible and/or by photograph.
Details to be provided to any committee member.
Competition period May 1st to April 30th. Prize awarded at AGM in April.
Winner's name and weight of fish to be published in May club newsletter.

NORTH SHORE FLY FISHERS CLUB SALT WATER FLY FISHING COMPETITION RULES

The “essence” of the competition is to encourage club member participation and in the process, to award a winner's trophy to the individual who catches the greatest number of salt water species. It will run from 1st April in one year to 31st March in the next year with

the trophy awarded at the following AGM. For the full rules please refer to the Club Website www.nsff.org.nz

CLUB TRIPS 2022

February – Ngongotaha River and Rotorua Lakes

March – Lake Otamangakau

April – Whanganui River – Club Competition Trip

May – Ngongotaha River and Rotorua Lakes 27th 28th 29th MAY 2022

July – Tongariro and Tauranga Taupo JULY 2022

November – Lake based Club Competition Trip – NOV 2022

December / January – Tuition weekend (Held if enough 'novice' anglers are interested)

December – Lake Otamangakau – DEC 2022

The NSF committee arrange various Club Trips over the year to different parts of the country. If you would like to be involved, or have an idea for a trip please let one of your committee know.



Tony Russell has been travelling the South Island, visiting some stunning locations and catching some great fish. A beautifully colored Brownie, perfectly adapted to blending almost unseen into its environment. Photo courtesy of Tony Russell.

MAY CLUB TRIP TO NGONGOTAHA AND ROTORUA AREA

This year's May Trip to fish the Ngongotaha River and the Rotorua region is on the weekend of Friday 27th, Saturday 28th, Sunday 29th May. We will again be staying at the Paradise Valley Lodge. Costs will be around \$105.00 each, which will cover 2 nights' accommodation in the lodge and a BBQ on Saturday evening. If you want to come down on the Thursday, as many of us do, then simply add \$45 to make it \$150.00.

Also, a variety of private rooms are available as well.

If you are keen just let me know which nights you can make asap and then pay your money to the Club.

- internet banking to the Club's bank account: North Shore Flyfishers Incorporated
ASB A/c #: 12-3209-0190179-00 (please include your name and the word Ngonga as a reference);

Duncan – 021 648 956 – iconpromote@gmail.com

Obviously things around Club Trips are still a bit fluid with the Omicron outbreak. Hopefully things will have settled down a bit by May.

*Once more unto the breach, dear friends, once more,
And fill up the freezer with our fishy dead.
In summer there is nothing so becomes an angler,
As the modest stillness and humility of catch and release.
But when the icy blast of winter blows in our ears.
Then imitate the action of the tiger.
Stiffen the sinews, summon up the blood,
Disguise fair nature with hard favoured rage.
Then lend the eye a terrible aspect and let loose the iki stick.*

CASTING TUITION – SEEKING EXPRESSIONS OF INTEREST

Your Committee is trying to find the best way to continue the Casting Tuition that we once ran when we were based at the Milford Marina.

If you would be interested in receiving some Casting Tuition please let us know as soon as possible. This is for all ability levels. Also, please try and give us an idea of what you would expect that Tuition to look like.

As a Committee we have discussed a variety of options, from running Instruction on Club Nights before the Meetings through to heading to a park with water such as Onepoto Domain at the foot of Onepoto Road in Northcote, or Sylvan Park at Lake Pupuke in Milford.

So please contact us as soon as possible if you are interested.

Simon - 021 037 6047 - hoolesimon@yahoo.co.nz

Duncan – 021 648 956 - iconpromote@gmail.com

JOKE OF THE MONTH

A new supermarket opened near my house.
It has an automatic water mister to keep
the produce fresh. Just before it goes on,
you hear the sound of distant thunder and
the smell of fresh rain.
When you approach the milk cases, you
hear cows mooing and experience the
scent of fresh hay.
When you approach the egg case, you hear
hens cluck and cackle, and the air is filled
with the pleasing aroma of bacon and eggs
frying.
The veggie department features the smell
of fresh buttered corn.
I don't buy toilet paper there any more.

AUCKLAND WAIKATO FISH AND GAME REEL LIFE - MARCH

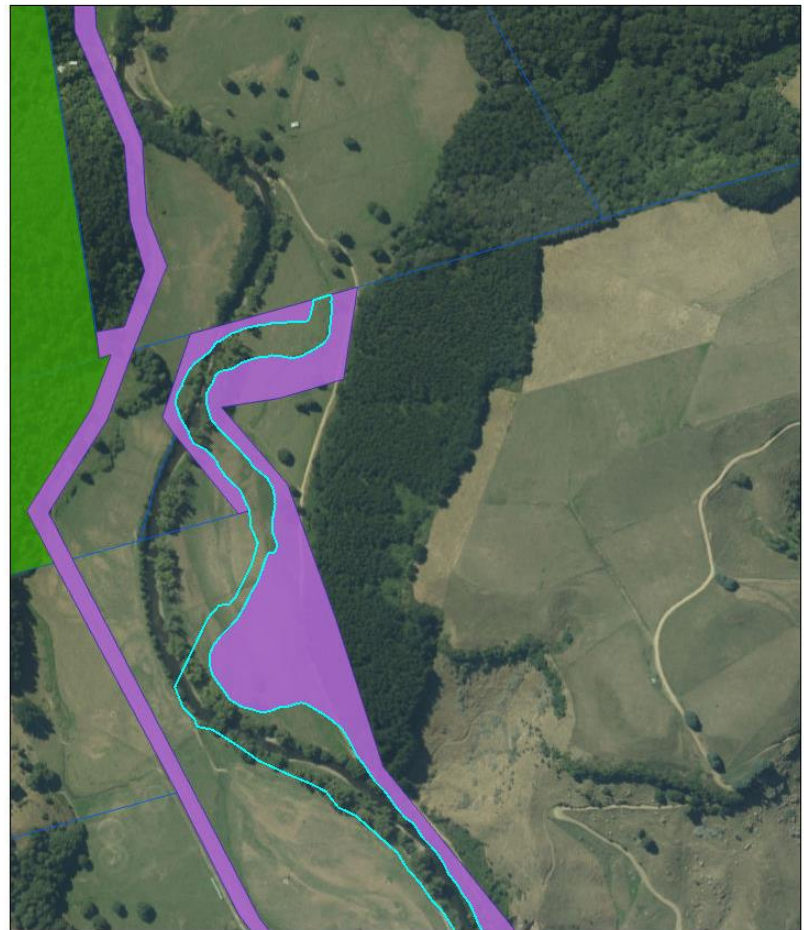
Waipa River Access

The land downstream of Toa Bridge on the Waipa River is primarily private until you reach the council metal pit (three kilometres below the bridge).

The two landowners on this section of the river have been justifiably upset with anglers illegally crossing their land without permission, and so are we.

This sort of behaviour can ruin access for other anglers for decades and is unacceptable.

Above right: Walking Access map showing privately owned riverbed.

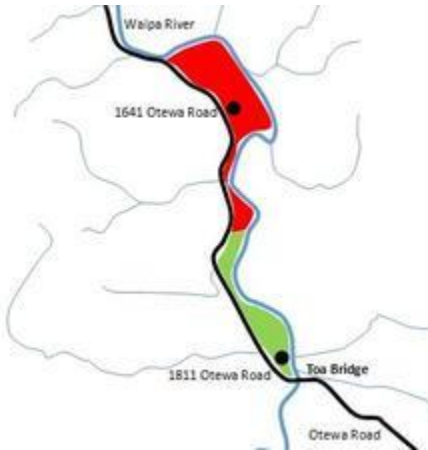


March 16, 2022

- NZ Road Parcels
- DOC Public Conservation
- NZ Primary Parcels

0 0.04 0.07 0.15 mi
0 0.05 0.1 0.2 km

Edge Technology, Land Information New Zealand, GEBCO, Community maps contributors



Landowner's homes marked with black dots.

Staff have been working with the landowners, and they have agreed to grant access on a case by case basis for those who ask in person.

Restoring access to this section of the Waipa is a huge benefit to anglers, so please ask nicely as this is a privilege, not a right.

If you wish to fish from the council metal pit upriver to the bridge, please ask both landowners listed on the picture left.

Are You Ready For The Roar!

Many of us put down our rod and pick up a rifle in April, but even if you don't hunt, it is a good idea to be prepared for the roar.

There will be lots of extra traffic in the backcountry, so the huts will be well used, and helicopter companies will be busy.



Staff member Adam Daniel with a river stag.

If you're planning a trip, avoid high traffic areas like the Pureora, Tongariro National Park and the catchments east of Taupo.

Most importantly, be safe; April is not the time of year to go fishing with your antler hat on.

If you go into the backcountry, take some brightly coloured clothing like a blaze orange hat or vest.

If you are going to camp out for the roar, don't forget your rod.

Most North Island high elevation rivers are very productive through the entire roar.

So rather than sitting around at camp at mid-day, take a fishing break; you never know what you may hook into.

Tight Lines - Dr Adam Daniel, Auckland Waikato Fish & Game

EASTERN FISH AND GAME REEL LIFE - MARCH



As I write this, long overdue rain in the Bay of Plenty is fair lashing the roof. The barometer and temperature have dropped, and thoughts suddenly turn to early autumn spawning fish!

The sighted brown trout fishing on Lake Rotorua has been spectacular over the summer.

This wet weather will be enough to stimulate their mindset toward spawning, so rather than running the

streams for cold water refuge, they will be heading upstream to reproduce.

That will bring another level of aggression to their behaviour, and big 'in-ya-face' wet flies and tiny glow bugs will be the go-to for the Ngongotaha and Waiteti streams.

Our monitoring of the Rotorua tributaries has shown browns dominate the April and May runs, after which rainbows begin their upstream migration.

While the weather has changed, the lakes still had surface temperatures of over 20 degrees Celsius a couple of days ago.

They are likely to 'mix' sometime over the next few months – a process where the deep layers of cooler water comes to the surface and mixes with the warmer surface water.

It's a regular occurrence for this time of year, can produce algae blooms and usually makes the fishing a bit tough for a few days.

That said, the fishing at depth hasn't disappointed this summer, with both catch rate and overall size and condition of the fish being excellent.

We've seen some pleasing fish and had reports of catches from Tarawera this month, including several over three kilograms caught jigging.

Rotoma too has produced some excellent catches of rainbows, as can be seen here with Anton Hutchinson's cracker fish pictured above.

Of course, Rotoma offers the somewhat elusive challenge of a tiger trout while you are chasing rainbows.

Think brown trout techniques while chasing tigers; after all, they are half brown.

Autumn Liberations Underway



Hatchery staff Eden Mutton releases fish at Tarawera

Our autumn fish releases are well underway, April will see another load into Rotoiti, Tarawera and Okataina, then our main autumn release in May sees fish released into most of the Rotorua lakes.

If you aren't familiar with our work, the fish are released at about one year of age, 16-18cm long, and will be of a decent 'catchable' size by next summer.

The better fish you are catching now would have been released in 2020 and 2021.

New Access Whirinaki



The new Whirinaki River access

Our team has just completed a nice new access to a section of the Whirinaki River near Minginui.

There's an angler access sign partway along the farm known to many as the 'Old jail-house farm', Minginui Road.

The access takes you to a beautiful stretch of river and a river crossing (suitable for

low and moderate flows) with access both up and downstream.

Datawatch Tagged Trout

Tagged trout can now be entered online. Entries go into the draw to win one of 20 free whole-season fishing licences: <https://www.surveymonkey.com/r/QCH5ZR6>

Eastern Region Fishing Diaries – All Lakes And Streams

Fill in your fishing diaries here to help us manage the Eastern Fish & Game region. Participants go in the draw to win a \$100 voucher from Kilwell: <https://www.surveymonkey.com/r/QRSD7D3>

Tight Lines - Mark Sherburn, Eastern Fish & Game Officer

CHRIS DORE'S FIVE LATE SEASON FLY FISHING TIPS

From the www.manictackleproject.com website.

Chris Dore is a battle tested fly fishing guide with over 15 years of professional guiding experience, battling the demanding, ever changing conditions that our New Zealand rivers throw at us.

LONGER, AND LIGHTER LEADERS ARE A MUST

As temperatures change so will feeding behaviour, and in that period between the summertime terrestrials and autumn hatches fish will often be well aware of their

surrounds. Longer, lighter leaders are just one tool, but an important tool in your belt to ensure you catch your share of fish.

MOVE SLOW AND STAY LOW

With lower angle light late in the season your shadows and movements become much more noticeable. I've found many New Zealand and Australian anglers to be pretty blasé with their riverside approach, so stay low, move slow, and make the most of any streamside cover such as bushes or backdrops.

SCALE FLY SIZE DOWN

While trout will still recognise the prey image of a large cicada, consider terrestrials with a softer silhouette such as the Bum Fluff Stimmie, or Swisher's PMX style ties. Better still, look for cross over patterns such as larger parachutes and Klinkhammer flies as larger, terrestrial food items become more scarce. Unweighted nymph trailers start to shine as fish are still looking up, but may be more hesitant to commit to breaking the surface. Dry fly fiends should not fear however, the autumn mayfly hatches are approaching and there are still enough fish willing to breach the top.

THE SCHEDULE CHANGE

Whilst in the heat of summer, mornings and evenings were often the peak time for trout activity, the cooling temperatures from here on in will often see slower starts, with activity building up around mid-morning to a peak throughout the afternoon. Don't write off the early starts however, as fresh migrations overnight mean there could be some very aggressive fish holding deep in the pools, awaiting an early morning streamer or deep, rubber legged nymph.

HUNT AROUND THE RIVER'S LOWER & MIDDLE REACHES

Trout don't need a fresh to run and the cooler temperature changes can get fish podding up and moving through from the estuaries. These fish will often hold over in the larger pools in the lower to middle reaches of our rivers and can provide some great sport in those reaches often overlooked during the summertime headwater frenzy.

When it's too cool for terrestrials but still a little warm for hatches the fishing can often seem a little tough, but change your locations, switch up your approach and put a little more effort into remaining undetected to make the most of what can be an epic late season fly fishing experience.



Another that fell to the pink and white clouser, this time a 48cm Trevally. Photo courtesy of Russell Nellson.

FISH-FRIENDLY PUMP MARKS MILESTONE IN FISH PASSAGE JOURNEY

Environment Waikato Press Release – 28/03/2022

Tuna (eels) were sighted going through the enclosed Archimedes screw pump at the Mangawhero pump station near Aka Aka, north Waikato, while Waikato Regional Council tested the new pump in operation.

During the successful test run, several tuna went through the pump and pump station outlet, making it to the other side safe and sound.

Pathways to the Sea Project Manager Michelle White says the instalment of the pump marks a massive milestone towards managing fish passage in New Zealand waterways as required by the National Policy Statement for Freshwater 2020.

“The council acknowledges the need for more sustainable use and management of our flood protection scheme assets, and this pump is the start of our mission to provide native fish with safe passage to the sea for spawning,” says Mrs. White.

She says the council will be testing the enclosed Archimedes to see how successfully it passes New Zealand native fish species as part of its research into minimising fish mortality through pump stations.

The pump has been sourced from the Netherlands and is the first of its kind in New Zealand. In Europe, enclosed Archimedes screw pumps have proven to be 100 per cent fish friendly.

“We’re looking to see how this kind of pump works with our native eels and if we get the same results,” says Mrs. White.

“We’ll be looking at whether tuna avoid the pump, what size tuna are passing through and assessing to see if there is any injury or mortality as a result of tuna passing through.” The monitoring will take place during the migration season in 2023.

Integrated Catchment Management chair (North) Stu Husband says the pump has benefits other than safe fish passage.

“It operates to support drainage in the catchment, and to transfer water during high rainfall events,” says Cr Husband.

“It rotates very slowly and delivers high efficiency so is cheaper to run, and it’s a simple design that won’t require much maintenance.”

A second site where an enclosed Archimedes screw pump will be installed is Churchill East pump station, near Te Kauwhata.

Waikato Regional Council received \$4.48 million from funds administered by the government’s regional economic development Unit, Kanoa – RDU, to support the upgrade of up to five pump stations in the Waikato to enable safe fish passage. Other sites are still being assessed for suitability.

A blessing will be held at the Mangawhero pump station in the coming weeks.

QUOTABLE QUOTES

Every lesson you learn, no matter where you learn it, transfers to all other rivers, no matter where you fish.

Dave Hughes

TARGETING BIG TAUPO BROWNS

The following is from Brian Willson, Turangi Guide and owner of the Turangi I love Fly Fishing Shop.

Well it has been another great week in the central plateau with more brilliant weather.. Earlier in the week I decided to target one of the small stream mouths entering into Lake Taupo. My aim was to catch a big brown that are abundant around shallow stream mouths this time of year.

I picked the Waiehi Stream mouth as I know this to be a good producer of browns. The trick to catching these elusive brownies is to target them and if a few simple thought processes are followed then more brownies will come to the net.

- 1 – When fishing stream mouths, fish at night.
- 2 – Pick a dark night, preferably with a bit of moisture in the air and fish to late.
- 3 – Fish shallow water. If you are standing in the water over your knees, you are too deep.
- 4 – Use floating lines and big streamer flies like Marabou or Woolly Bugger.
- 5 – Make sure the wind is right. Check the forecast and make sure you don't get blown off the water midway through the night. In the case of the Waiehi a northerly is a no no.

I arrived at the stream mouth an hour before dark. I always come early when I am fishing at night to get accustomed to everything that is going on.

Where can I see big browns cruising? (The big square tails give them away). Where is the current going? If unsure, throw half a dozen pumice into the water. Generally they will all end up in the same place. Don't worry too much about being in the rip where other fishermen may be fishing. Often the best fishing is where the current bends back towards the shore which may be some distance from where the stream enters the lake.

Anyway, this night was perfect. Certain to be dark as it was around new moon and a light southerly was blowing making the lake flat. Ideally I like a bit of a ripple on the top but all in all conditions were good.

Around 7:30pm it became dark and I was soon into a fish but lost it just as quick. I had an elderly female angler next to me and she could throw a good line. As usual in these situations, conversation begins and for the next hour we kept each other company.

Then I had a solid strike. I told her to stay where she was and I would steer the fish back to the bank. I had another angler on my left that I could just make out so I had to be careful. The fish was strong and I rightfully predicted it to be a brown.

I pulled him into the shallows and then it started thrashing around all over the place which is typical of browns and often when they get free.

My female fellow fly fisher was also backing out and I realised she also had a trout on. We both landed the fish, mine a splendid 8.5lb brown Jack (pictured), and hers a respectable 4lb rainbow Jack. She took a photo of me and I bid her good night as I had accomplished what I had set out to do and I had a big day tomorrow. The time was 8:30pm.

Now is the perfect time of year to target browns at stream mouths. I believe there are 2 good months left, April and May especially April so get out there while they are out there.



Brian with his 8.5pd Brownie. Photo courtesy of Brian Willson.

EDITORS NOTE

Winter is almost here, get out and fish those dry flies while you can!

FISHING FUNNIES



**“I’m home...What a terrible day...I
took your ladyshaver to work
instead of my taser!”**

(Opinions expressed in this Newsletter are those of the individual contributors and not necessarillary those of North Shore Flyfishers Incorporated)

MEMBERS FEEDBACK

We, your committee, are always trying to give you what you want.

But are we??

In order for us to do our job properly we need to have your feedback, positive or negative. For example, have you been on a club fishing trip? Did you enjoy yourself? What would you change, if anything? Club nights – what would you like to see more of? Less of? In short, talk to us.

The contact details of all your committee members are listed at the end of every newsletter. So if you have something on your mind let us know.

Thank you - Your committee

NSFF CLUB MERCHANDISE

Cap – \$15.00 Inclusive of GST

Green or Beige, one size fits all, with embroidered badge.

Embroidered Cloth Badge - \$7.50 Inclusive of GST

Brushed Brass Metal Pin Badge - \$12.50 Inclusive of GST

If anyone is interested in purchasing these products please either place an order at Club Nights.

Meetings held the 3rd Tuesday of each month at 7.30pm:
Birkenhead RSA, Recreation Drive, Birkenhead, North Shore City

NORTH SHORE FLYFISHERS EXECUTIVE

Club Patron – Dave McLellan

President - Dave Symes 486-6257 Takapuna

Secretary - Mike Martindale 489 1082 Takapuna

Treasurer - Barrie Barnes 021 925 006 Glenfield

Magazine - Duncan Frew 021 648 956 Torbay

Committee - Simon Hoole 021 037 6047 Northcote

Members Pawel Mikolajczyk 021 960 806

 Maurice Parlane 021 650 692 Northcote

dssymes@xtra.co.nz

miketmartindale@gmail.com

barrie@iloveflyfishing.kiwi

iconpromote@gmail.com

hoolesimon@yahoo.co.nz

pawel_mikolajczyk@yahoo.co.nz

maurice.p@newwayz.co.nz

North Shore Flyfishers Incorporated