



THE FLYFISHER NEWSLETTER

September - 2019

IN THIS ISSUE

Page 1 -	Presidents Report
Page 2-	Fishing Report
Page 4 -	What's Happening – Club Nights / Events
Page 11 -	Fly Tying Tuition
Page 12 -	Club Trips
Page 16 -	Top 10 Casting Errors... And How To Fix Them
Page 17 -	It's Ok To Eat Taupo Trout
Page 18 -	Waipa Trap Monthly Report
Page 19 -	Winter Runs In Taupo Far From Over
Page 19 -	Auckland / Waikato Reel Life Report – August
Page 21 -	Eastern Reel Life Report - August
Page 24 -	Editor's Note
Page 25 -	General Club Information Plus Committee Members Contact Details

PRESIDENT'S REPORT

I have just returned from a trip to Sicily where, on many occasions around the coast, I saw anglers fishing from wharves and rocks and catching small fish, amongst which were specimens very similar to our Piper. In fact, there were a number of species for sale in fish shops which are probably found all around the world including John Dory, Snapper, Scorpion Fish and one almost identical to our Kingfish.

While not quite the Mediterranean, the beaches, rocks and wharves around the North Shore provide a wonderful opportunity for budding (and experienced) anglers to practice their fly casting, particularly in light line weights like no.5 or 6. I have often enjoyed some excellent mini-battles with our local “swordfish” (Piper), a very abundant species which often lives very close to shore and well within the casting range of most flyfisher folk. In fact, a few handfuls of well soaked chicken mash tossed into the water will usually bring them into the target zone.

Apart from the vigorous fight that these small “gamefish” put up which can include some moments of tail-walking, they are also very good eating and if you catch too many they are also the ultimate bait for Kingfish! Provided you use light tackle, it is a most enjoyable way to spend some time within a short drive of where the majority of us live. Using a floating line, they respond well to both an active retrieve and a dead drift. If retrieving, I find that the best fly is a small silicone smelt on a size 12 or 14 long-shank hook and a leader of only 2 or 3 pounds breaking strain. The alternative is to use a small yarn indicator and one or two size 16 willow grubs cast out and allowed to drift around until contact is made. In both methods I grease the leader with silicone up to about 200mm from the fly as Piper generally live and feed in the top 300mm or so of the sea and if the flies sink too far the chances of a “hook-up” are reduced considerably.

Given that most of us only get to chase our favourite freshwater quarry on far too few occasions, this is one way of keeping (or improving) casting skill levels up, stretching those annoying memory coils out of the line and also providing a delicious meal. It would also be a great way to introduce younger anglers to the sport and to prepare them for bigger and better things. Just remember to give your gear a thorough clean as while 5 or 6 line weights are the most appropriate, they will almost certainly be freshwater setups so make sure that you get rid of any salt with a good wash/clean/dry before putting things away. **Tight Lines!.**

Dave Symes
President

FISHING REPORT

Auckland / Waikato

Alas, no report again from our local waters. However, October the 1st will see a lot of water open again that has been closed for the winter spawning season. This means that you can fish to Trout that haven't seen a fly in several months AND will be hungry and keen to eat almost anything as they put weight back on from the trials and tribulations of winter nooki.

It is a good time to use flies with a little ‘bling’, that is an attractor dry fly or nymphs with a hot spot.

Rotorua

Patchy. That is without a doubt the best way to describe the Rotorua fishing at present. Some excellent fish are being taken by shore based anglers but they can be few and far between. Unless that is you strike it right and all the conditions come together, because when that happens it has apparently been fantastic, but only for very short periods of an hour or two. In short, you really need to put in the hours to get the success.

Taupo Region

Dynamic. That is the word to describe last week’s fishing according to some, but others struggled. At this time of year in Turangi we are still dependent on fresh runs of Trout coming out of the Lake and moving upriver to spawn. When they come through the fishing can be outrageously good, Garry Robert’s mate Graeme landed over 70 for two days fishing, but in between the runs it can become a bit harder. When it is like this rather than staying in one pool, keep moving around and try different spots. Eventually you will find fish that are ready to eat your flies.

Also, it won’t be long before the spring dry fly action starts up on the Tongariro in the evenings. So if you are heading down there next month make sure you take the full range of flies, natural nymph patterns, glo bugs, and dry flies. If you are a ‘swinger’ like Simon and Barrie then make sure you have some slower sinking tips and some soft hackle nymphs that you can swing through the top of the water column.

Saltwater Report

This is new and it is a bit of an experiment. So please send me in reports!

On a recent ‘bait fishing’ expedition out to Rangitoto I had my Fly Rod with me and cast my flies down the berly trail. I did manage to land two legal Snapper in amongst the plethora of undersized but super aggressive fish, and two nice Kahawai. Great fun on the fly gear. Fly that worked, a Pink and White Clouser fished on a sinking tip fly line.

Fishy Tales

- If you do have a report, success story, or anecdote to share then just send it to iconpromote@gmail.com . Happy Fishing and Tight Lines – Freddy Da Fish.



Graeme Dean with a nickel silver Taupo Rainbow that he had been 'guided onto' by our own Garry Roberts. Photo courtesy of Garry Roberts.

CAN YOU HELP

Some members will have met Enrico (Harry) Bregni at the August club night. Enrico is in NZ until the end of the year, living with a host family in Unsworth Heights (Bluebird Crescent) and attending Glenfield College. As you might have gathered, he is a young enthusiastic angler, having fished not only at home in Italy but also in places like Slovenia.

Getting from Unsworth Heights to the RSA in Birkenhead in the evening is a bit of a mission on public transport so I was hoping that someone living nearby could provide transport to the September, October and November club nights. While I can help if necessary, it's a long detour from where I live in Herne Bay. I will pass on Enrico's contact details if you can assist. Grazie mille.

Dennis Smith **376-3375** de.smith@xtra.co.nz

LAST CLUB NIGHT

Last month we had a variety of short videos as a movie night. It was a very enjoyable evening.

NEXT CLUB NIGHT – 17th SEPTEMBER 7.30 PM

WE HAVE MOVED.

This month is our fourth Club Night at the Birkenhead RSA.
The address is: Birkenhead RSA, Recreation Drive, Birkenhead.

To enter you can either go through the front doors, continue straight ahead and then take the stairs (or lift) on your right to go downstairs. Alternatively, you can walk downhill around the back of the RSA and come in through the side doors that lead directly into the Meeting Room.

Refreshments are available at the main Bar upstairs, immediately on your right as you enter through the main front doors. There is plenty of parking.

This month's Meeting we have Craig Caldwell speaking on the Puniu and other South Waikato streams. Some may know Craig and his wife Wendy as the proprietors of the B&B Trout Heaven, on the Puniu River. What some may not know is that Craig and Wendy tirelessly and voluntarily run the Casting For Recovery (women) and Reel Recovery (men) programs. Both these programs are sponsored for those with or recovering from cancer. They are also very involved with the environmental restoration projects of the local area rivers and streams. It is planned that the presentation will cover a number of aspects including the programs and the local waters of at least the Puniu and Mangatutu.

This is sure to be an enjoyable night and we hope to see you there.

QUOTABLE QUOTES

The line between religion and fly fishing is barely there anyway, and this is most obvious when it comes to proselytizing. I don't ever start a conversation with the intent of making a convert, but it happens before I know it

Johnny Carrol Sain

FISHING BUDDIES SOUGHT

The intention is to display a list of names of Club Members that are keen on finding a 'buddy' to go fishing with, either on a regular basis or just for a day. In essence it's a fly-fishing dating service...

Name	Availability	Contact Details
Ron Blair	Anytime, has a 14.4 Marco with 60hp etec Evenrude for serious fishing Salt or Fresh	home 09 834 8841 mobile 0275 006 336 ron.blair@xtra.co.nz
Les Rose	Retired and is happy to take another person fishing during the week. Has a small 2 person boat.	home 09 4183634
Graham Carter	Lives in Hamilton, keen on weekday / mid-week trips.	021 026 00437 07 855 1833
Lloyd Altham	Has 12' Pontoon boat /15 HP Honda. Available most time, but prefer weekdays.	Mob. 021 0295 9167 Home 09 420 3120 email-lloyd@skysupply.co.nz
Matt Meikle	Available both week days and Weekends	09 908 1909 027 285 7521
John Gausden	Time limited - weekends / arrange trips only. 5m aussie barra boat / 70 yamaha / minn kota - serious fishing manly lake / saltwater but keen to learn more on the rivers	021704373 john@st-classic.com
John Rust	Anytime. Keen to give it a crack.	021 648 991 joan10@live.com
Barry Schultz	Has a 551 MacLay with a 90hp merc used mostly for SW fishing. Also a 6.5 mtr motorhome that provides transport, accommodation & meals etc. whilst camped riverside or beach front, plus is currently being fitted out to carry a three person inflatable with a 4 hp motor. Prefer weekdays or multi day trips away in the motorhome.	09 415 4919 09 4159692 e-mail bardot@xtra.co.nz

So, if you are keen to find someone to share the cost and the fun of a fishing expedition with, then send in your details and we will get it all started. Send details to iconp@ihug.co.nz



A nice fat pannie Snapper taken on the fly by our resident boat salesman Russell. Photo courtesy of Russell Nelson.

CHOOSING THE RIGHT FLY ROD

Our own resident webmaster Phil Gates, has put a couple of very helpful videos onto the Club Website, www.nsff.org.nz. They are both by Tim Rajeeff, a world champion fly caster. One is about 'Choosing The Right Fly Rod' and the other is about 'Light Vs Heavy Weight Fly Rods'. These are excellent informative videos and both are under 3 minutes long, so they are short, and to the point. Check them out.

INFORMATION SHARING

As well as having a guest speaker on Club Nights we would like to give an opportunity for some of our own Club Members to share knowledge on any fly fishing subjects.

Member Speakers

Besides having a major Speaker on Club Nights we would like to have some of our own Club Members to speak on any fly fishing subject for 10 – 15 minutes or so.

Some subjects could be:

Local fishing spots.
National / Taupo fishing regulations.
Riparian rights, access.
Clothing and equipment ideas / tips.
Saltwater fishing, what rods / flies.

So, Members please get out there and do some research to enlighten us all.

WEBSITE ARTICLES REQUEST

As many of you will know, Barrie Barnes has started up his own online fly fishing store and he is keen for articles and pictures to put into his Blog section. What he is looking for is simple short little articles and a picture, ie: ‘Bob and I headed down to Turangi last weekend and ...’ So if you have something you would like to share please contact Barrie on barrie@flyfishinginxs.kiwi

WHY WE FISH

The angler is never a has-been. He enjoys a lifetime of participation which continues through noon, then on into the sunset, and even into the eventide of life.

Charles K. Fox

“BROWN TROUT TROPHY” COMPETITION RULES

Winning fish will be determined by weight.
Verification by partner where possible and/or by photograph.
Details to be provided to any committee member.
Competition period May 1st to April 30th. Prize awarded at AGM in May. Winner’s name and weight of fish to be published in June club newsletter.

NORTH SHORE FLY FISHERS CLUB SALT WATER FLY FISHING COMPETITION RULES

The “essence” of the competition is to encourage club member participation and in the process, to award a winner’s trophy to the individual who catches the greatest number of

salt water species. It will run from 1st May in one year to 31st April in the next year with the trophy awarded at the following AGM.

For the full rules please refer to the Club Website www.nsff.org.nz

CHANGES TO CONTACT DETAILS

Committee members organising club trips and similar events are finding that the phone and email information that we hold for some members has become out of date. If you have changed your address, landline number, mobile number or email address in the last year or so and have not passed the new details on to NSFF, could you please advise John Cuthbertson by email, his **new** email address is john.cuthbe@gmail.com .



Simon has been at it again! Catching fantastic Brown Trout on his swinging gear. Photo courtesy of Simon Hoole.

FOR SALE

Just a reminder, if you ever have any Fishing Gear you are keen to sell then the Club is happy to put something in the Newsletter for you.



FOR SALE

Pelin 12ft Plywood Dingy -
8hp Mercury Outboard
2 Tanks – 11lts each
Oars – Life Jackets – Anchors – Seats
(09) 418 3634 – Ask for Les
\$3750-

CLUB TROPHIES

Brown Trout Trophy – This is awarded to The Heaviest Brown Trout caught by a Club Member during the year – May 1st to 30th April. Current holder is **Roy Richardson**.

Chain Snore Trophy – A fun award given immediately after any Club Trip to the person who has done the ‘funniest’ thing over the weekend. If nobody has had anything like this happen it may be awarded to the worst snorer.

Ian Hunt Memorial Trophy – Heaviest Trout caught fly-fishing by a Club Member during the Pupuke Challenge Competition. A competition run every year to promote the Lake Pupuke fishery. Current holder is **Lucas Bathurst**.

I Love Flyfishing Trophy – Awarded to the Club Member who has caught the most species of Saltwater fish fly-fishing over the year – 1st May to 30th April. Current holder is **Simon Hoole**.

Rodd And Gunn Trophy – This is the Club Competition which takes place over two days. One Day on a Lake and one day on a River. Current holder is **Simon Hoole**.

The Lake part of the competition has its own Trophy, the **I Love Flyfishing Stillwater Trophy**. Current holder is **Warren Derrick**.

FLY TYING TUITION

Are You Interested In Fly Tying?

On Tuesday the 3rd we had our first Fly Tying Tuition Session at the RSA.

Initially these classes are more for those who are beginning or have done very little fly tying. We are starting with basic nymph patterns, this month it was Hare and Coppers, and Pheasant Tail Nymphs, and then move on to other patterns like wee wets and streamers.

The Class is held in the small meeting room upstairs at the Birkenhead RSA once a month, on the first Tuesday of the month, and starts at 7pm.

For participants the only requirement is to turn up, bringing a fly tying vise if you have one. For the evening tuition, everything else, materials, hooks etc. will be provided.

The provision of materials requires that the club knows before each evening the number of members that will be attending. So please register your interest by email to barrie@flyfishinginxs.kiwi by 27SEP19. A follow up email will be sent directly to those who register their interest by that date.



This month's Fly Tying session in action. Photo courtesy of Barrie Barnes.

CLUB TRIPS 2019

January – Mohaka River

February – Ngongotaha River and Rotorua Lakes

March – Whanganui River – Club Competition Trip

March – Lake Otamangakau

May – Ngongotaha River and Rotorua Lakes

July – Tongariro and Tauranga Taupo

October – Lake based Club Competition Trip

November – Tuition weekend (Held if enough 'novice' anglers are interested)

December – Lake Otamangakau

The NSF committee arrange various Club Trips over the year to different parts of the country. If you would like to be involved, or have an idea for a trip please let one of your committee know.

RODD & GUNN TROPHY – STILLWATER SECTION

The Stillwater competition for the I LOVE FLY FISHING Trophy and the Stillwater section of the RODD & GUNN Trophy (*combined Stillwater and River*) will be held on **Saturday, 16 November.**

Competitors may fish any lake or lakes of their choice in the **Rotorua district** within the stipulated competition time. As this is a stillwater competition, all streams, the Ohau Channel and for Lake Rotorua within 100m of the Ohau Channel and within 20m of any other stream mouth are excluded. This not a super-serious competition and all club members are urged to participate. Treat it as a social club event and have fun. For any questions call Barrie Barnes, 021 925006.

IF YOU ARE TAKING PART:

- The competition is open to all financial members of the Club. Intending participants must register with Barrie Barnes, by email barrie@flyfishinginxs.kiwi by **Sunday, 08 NOV 19.**
- Competitors will be required to have their own measuring tapes and be trusted to measure their fish and record the lengths. It is desirable that the measuring be witnessed by another member or if another member is not present then photographed against a tape measure e.g. with phone. The winner must be able to show evidence and any dispute will be decided on evidence provided.

DATE and FISHING TIME

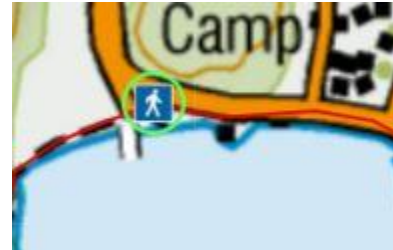
From 7.00 am until 5.00 pm on Saturday, 16 November.

HOW TO SCORE

- The winner of the stillwater section will be the person with the highest aggregate number of points.
- One point is allocated for each cm length of fish, as outlined below.
- The fish will be measured from nose to **end of tail**. Length will be rounded up to the next full cm. For example, a 31.4 cm fish will be scored as 32 points. No fish less than 18 cm will be measured (a 17.5 cm fish is not rounded up to 18cm.) Measurements are to be verified by another angler or by a photograph of every fish against a tape measure.
- Remember you can measure as many fish as you can catch **HOWEVER** if you catch and kill the limit you must stop fishing.
<https://fishandgame.org.nz/assets/Uploads/Anglers-Notice-2018-19-Eastern.pdf>

POST COMPETITION

- It is planned for all competitors to meet at the Blue Lake boat ramp area at 1800hrs 16 NOV 18.
- Whilst all scores will be checked, recorded and winner determined this will also be a social get-together. Maybe bring a bar-b-que if you wish. There are toilet facilities at this location.



DECEMBER CLUB TRIP TO LAKE OTAMANGAKAU

I am proposing the weekend of 29th, 30th November, and 1st December (Friday, Saturday and Sunday) with some of us arriving on Thursday the 28^h.

While it is predominately a boat fishery, the Te Whaiu (inlet) canal which can be fished from the shore, and particularly the “holding” area immediately above the road bridge, offers a big range of casting positions.

Just be aware that with an altitude of some 2,000 feet above sea level, the conditions can go from warm and pleasant to bleak very quickly!

The last 2 December Trips have seen some fantastic fishing, and by December the fish are well over the rigours of the winter spawning season and are in great condition. Big, fat and powerful!

Costs will be \$50 per person per night.

The Accommodation is your own little room with 2 beds, 1 for sleeping and the other for your gear.

There are shared cooking facilities.

I have “penciled in” 8 cabins at Tongariro Holiday Park so if anyone is interested, please let me know ASAP.

Dave Symes - Ph: 09 486-6257 - Email: dssymes@xtra.co.nz

SALTWATER EXCURSIONS

The possibility of Club Trips to the Meola Reef and to the Mangawhai Estuary has been raised earlier. With summer approaching, we would like to establish an Email Contact Group for those members interested in shore-based saltwater fishing to these or similar destinations. This sort of venture is tide and weather dependent and can only be organised at short notice. If you would like to be included in this group, please tell Dave Symes (dssymes@xtra.co.nz).

JOKE OF THE MONTH

A man was sitting on the edge of the bed, observing his wife, looking at herself in the mirror. Since her birthday was not far off he asked what she'd like to have for her
Birthday.

'I'd like to be twelve again', she replied, Still looking in the mirror.

On the morning of her Birthday, he arose early, made her a nice big bowl of Coco Pops,
And then took her to Disneyland theme park.
What a day!

He put her on every ride in the park; The Death Slide, the Corkscrew,
The Wall of Fear, the Screaming Monster Roller Coaster, everything there was.
Five hours later they staggered out of the theme park. Her head was reeling and her
stomach felt upside down. He then took her to a Mc Donald's where he ordered her a
Happy Meal with extra fries and a chocolate shake. Then it was off to the cinema with
popcorn, a huge Cola, and her favourite sweets.....M&M's.

What a fabulous adventure!

Finally she wobbled home with her husband and collapsed into bed exhausted.
He leaned over his wife with a big smile and lovingly asked,
'Well dear, what was it like being twelve again?'

Her eyes slowly opened and her expression suddenly changed.

'I meant my dress size, you retard!!!!'

The moral of the story: Even when a man is listening, he is gonna get it frickin' Wrong.

TOP 10 CASTING ERRORS... AND HOW TO FIX THEM

Zach Matthews - www.itinerantangler.com

(This article has been copied from the Itinerant Angler website and I have broken it down into so that each of the 10 tips will be covered over the rest of the years Newsletters. If you want to see them all now and not wait then go to the website. This is a website well worth visiting! Ed.)

I TAUGHT MYSELF TO CAST, many years ago, using a tattered old blow-in flyer from a Fly Fisherman magazine and a whole lot of guess-and-check. In some respects this is the best way to learn anything, because you make every conceivable mistake on your way to competence. While unquestionably the slowest way to get good at anything, there are advantages to having “been there and done that” when it comes to casting errors. For this Ten Tips piece, I wanted to outline the consensus “Top Ten” casting errors, as well as how to go about fixing them.

#8 The Texas Twister

Some anglers view line twist as an inevitability; a necessary evil created by their stroke or even the act of fly casting itself. “I’m a sidearm caster,” they say, explaining why their fly needs time to untwist itself every few casts. This is a mistake; properly done, even sidearm or “Belgian” casting should not impart twist to the line.

Twist actually happens as a result of a handful of easily identified malefactors: one is our old friend the Planar Traveler. If an angler perpetually casts out of plane, the infinity-loop path of the fly can eventually impart twist. This is especially true if the fly is corkscrew-shaped on some level itself, which is true of all wooly buggers and many dry flies with classic collars. Flies can also twist when they are canted to one side or another, often as the result of a knot getting wedged in a corner of the hook eye, or in the case of larger baitfish patterns with epoxy eyes, when the epoxy has been allowed to settle to one side, creating a significant weight imbalance.

The solution to the twist problem is to run down the checklist: First, is the fly itself corkscrew shaped? If so, try increasing leader thickness to impart some rigidity to the system, or switching from soft mono to harder fluorocarbon tippet if an increase in X-size is not an option. Second, has the knot slipped to one side? If this is a consistent problem, switch to an open loop knot, like the non-slip mono loop or the Duncan’s loop. Third, is the fly itself defective in the sense of being weighted poorly? If so, switch flies, and do a better job tying it next time, wouldja? Finally, if none of these things are the problem, look in the mirror. You are most likely guilty of a little planar travel, and you should pick out a target behind you and keep that tip path in line.

IT'S OK TO EAT TAUPŌ TROUT

DOC – Taupo Fishery Focus

Good conditioned trout continue to feature this season. Fishery Rangers took this photo of a couple of crackers caught by Brian Hawkins on the Tongariro River earlier in the week - 560mm, 2.5kg and 530mm, 2kg.

While we appreciate many anglers choose to catch-and-release, we can confirm that the Taupō fishery benefits from anglers harvesting trout.

This is because Taupō's spawning tributaries are highly productive so the recruitment of juvenile trout is exceptionally high. Too many hungry trout entering the lake can put excessive pressure on their primary food source - smelt.

So enjoy your fishing and feel free to take a few for the smoker!
A full article entitled 'Trout - harvest or catch and release' can be found on our website:

<https://www.doc.govt.nz/.../trout-harvest-or-catch-and-relea.../>



WAIPA TRAP MONTHLY REPORT

DOC Taupo Fishery Focus

Trap data for July

We're now well into the winter fishing season and although temperatures have finally dropped after a mild start to winter, the number of trout entering the fish trap has continued to increase. July recorded a total of 177 trout trapped with browns still accounting for 54% of the total monthly run. The fish trap was operating for a total of 23 days during July with two floods 'overtopping' the trap during early and mid-July.

Overall the trap captured an average of 8 trout per day:

- 3.7 rainbows per day, and
- 4.2 browns per day.

The max number of trout trapped in a single day was 25:

- 10 rainbows, and
- 15 browns.

August onwards should see rainbow trout dominate the data as the brown trout spawning run comes to an end. Data from recent years have shown that 70% of the rainbow trout spawning occurs between September and December. As a result, the number of rainbows in the region's rivers should increase significantly over the next 3 months.

Comparison with last year

Compared to the same period last year, we continue to see an improvement in the size and Condition Factor (CF) of trout across both browns and rainbows. Overall, rainbows are 24mm longer and 300 g heavier than those trapped during the same time last year. Similarly, the browns are on average 8mm longer and 300g heavier this year. This aligns with reports from the angling community. The graphs and tables clearly indicate improvements across the board for Brown Females (BF), Brown Males (BM), Rainbow Females (RF) and Rainbow Males (RM).

'Drift diving' is another scientific technique we use to gather data on the number of trout spawning in other locations around the Taupō region. These dives commenced at the end of July and will continue through until the end of the spawning season. Early results mirror what we are seeing in the fish trap, with rainbow trout counts across many of the eastern tributaries yet to reach maximum levels.

Waipa trap data July 2019, compared to July 2018

	July 2019					July 2018					Total rainfall (mm)
	Brown trout female	Brown trout male	Rainbow trout female	Rainbow trout male	Total	Brown trout female	Brown trout male	Rainbow trout female	Rainbow trout male	Total	
Count	45	51	40	41	177	51	26	33	36	146	236
Ave length (mm)	596	606	515	519		589	603	493	495		
Max length (mm)	670	685	600	610		685	675	570	590		
Ave weight (kg)	2.8	2.7	1.7	1.6		2.5	2.5	1.5	1.4		
Max weight (kg)	3.65	3.6	2.6	2.6		3.2	3.45	2	2.5		
Condition factor	47.5	44.5	44.3	42.3		44.5	40.8	43	40.3		

WINTER RUNS IN TAUPŌ FAR FROM OVER

DOC Taupo Fishery Focus

If you've not yet completed your winter pilgrimage to the Taupō fishing region, fear not, plenty more chrome Rainbow Trout are yet to enter the rivers. The fishing this year has already been exceptional but recent trends tell us the greater proportion of fish run towards the end of the winter season!

So, you still have time to organise a trip. Remember to use our online service to get your Taupō trout fishing licence, so you can arrive ready to go - www.doc.govt.nz/fishinglicence

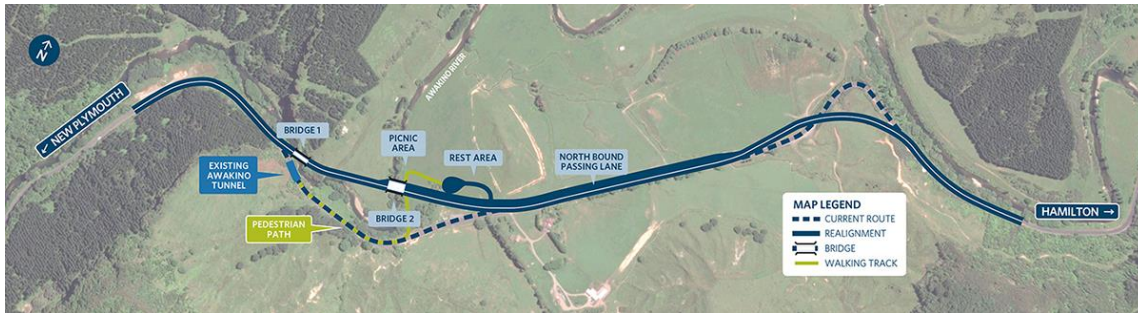
AUCKLAND/WAIKATO REEL LIFE AUGUST 2019

Awakino Gorge Will Close The Tunnel And Open Angler Access

The initial consultation about safety improvements to the Awakino Gorge Highway with the NZ Transport Agency did not go well.

Staff were shocked to see one of the initial options included “realigning the river” and follow up questions included “what mitigation would you like to see if we remove bends and pools”.

Staff did agree something needed to be done to improve the very dangerous section of the Awakino Gorge that includes the iconic but scary tunnel.



Above: The proposed upgrade of the Awakino Gorge Highway.

If you have ever fished this section of the river you know it is beautiful, but you often risk your life trying to pull on or off the highway to get to the river.

Fortunately, the preferred option now includes two bridges and will not impact the river.

The finished project will retain the old road as a walking trail and have a parking area for angler access.

The only negative part of the project will be the closure of the tunnel but that's a minor price to pay for improved access.

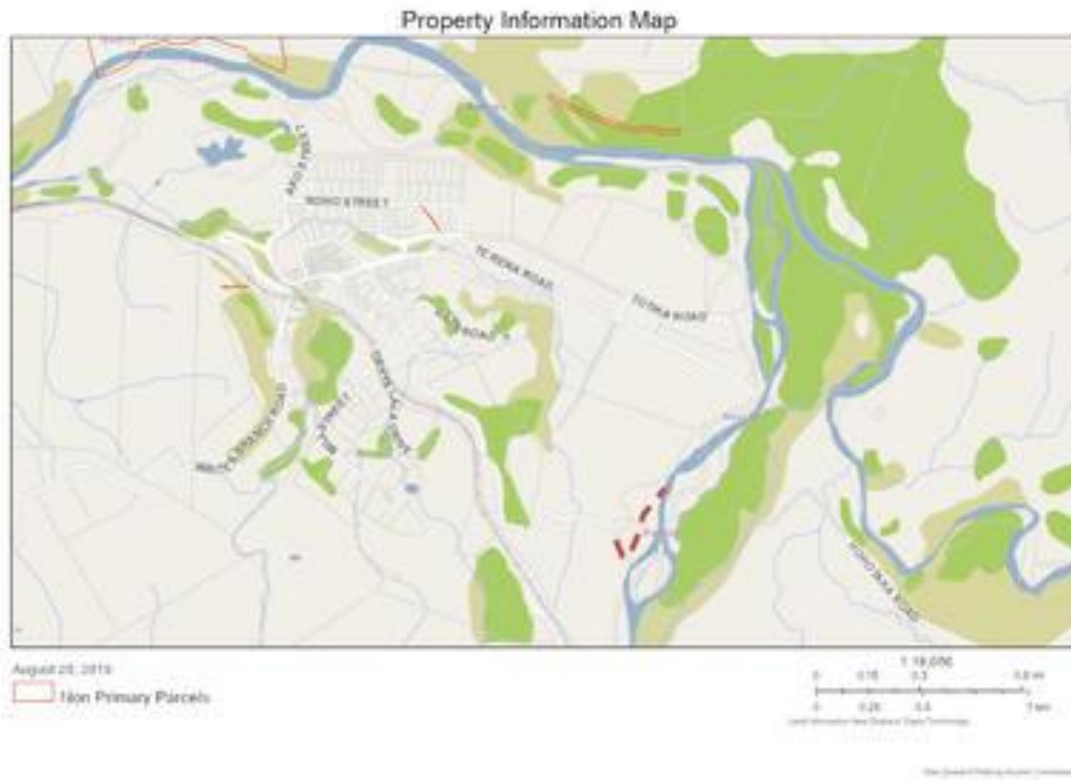
If you see diggers working alongside the Awakino over the next year rest assured this is a project Fish & Game approves of.

Stone Jug Road Will Reopen For Angler Access

Fish & Game staff are excited to announce the reopening of the Stone Jug Road access to the lower Whakapapa River.

After a decade of closure Stone Jug Road will reopen for the 2019-20 season.

The river was closed over a decade ago when the property at the end of Stone Jug Road was sold and the title included the riverbed.



Map of new access (red dashed line).

The new walking access will allow anglers to park at the end of Stone Jug Road and follow the track down the hill and across the paddock (downriver) that was previously closed.

Anglers can also continue fishing upstream from Te Rena Road (Kakahi Landing).

The new access opens the lower 3 km of the Whakapapa River to anglers.

Adam Daniels, Auckland/Waikato Fish & Game Officer.

EASTERN REEL LIFE AUGUST 2019

As we await the beginning of spring, and the new trout season commencing at the beginning of October, there are a number of locations still open that can provide excellent fishing.



Above: Isaac Jensen with a solid brown from the Rangitaiki Canal.

Lake Rerewhakaaitu is one such place, the shorelines around Homestead Arm, at Ashpit Bay in the north and the Domain in the south are all spots worthy of some attention.

A floating line and small glow bug suspended under an indicator or twitching an olive damsel fly nymph along the edge of the weed beds have proven to be a successful technique.

Spin fishing is also popular, making Rerewhakaaitu an ideal place for children.

A Mepps black fury or traditional black and gold turbo are both good choices.

Rerewhakaaitu is stocked with 7,500 rainbows annually and the size and condition factor are looking good this season.

The lake also lends itself to trolling, and as spring dawns a Tassie and smelt fly combination from the shallows right out to the 10m mark (deep) will produce fish.

Flaxy Lake and the Rangitaiki canal in the Kaingaroa forest are also providing some great sport for anglers this winter.

Forest access is limited to winter weekends and periods of very low fire risk these days which has resulted in less pressure on the forest fishery.

Permits for the forest fishery can be obtained from Independent Securities Consultants Ltd Rotorua: Tel 07 347 8880.

Access is likely to continue until the end of September.

If you prefer to troll, Lake Rotorua can fish well during the early spring.

The lake features a large number of wild fish, mostly rainbows, but also well-conditioned and hard fighting brown trout.

The area off the Ohau Channel, the Pins in the north and the stream mouths in the northwest at any time are great places to try.

There are a number of boat ramps available and a brochure on Lake Rotorua can be found at the Eastern Fish & Game web pages.

Eastern Region News tippets:

- Children's fishing days at the Ngongotaha hatchery are fast becoming booked. See the eastern web page for a link to the booking page.
- We are giving a boat fishing 'how-to' talk at the rugby clubrooms, Gisborne Point, Lake Rotoiti on Saturday 28th September, 3.00pm – come along and learn how to be successful on the opening day! Gold coin entry, bar open afterwards. Or contact msherburn@fishandgame.org.nz for more information.
- Spring liberations for the Ngongotaha hatchery commence in September – contact us if you wish to help with fin marking and liberations or simply wish to see a fish release.

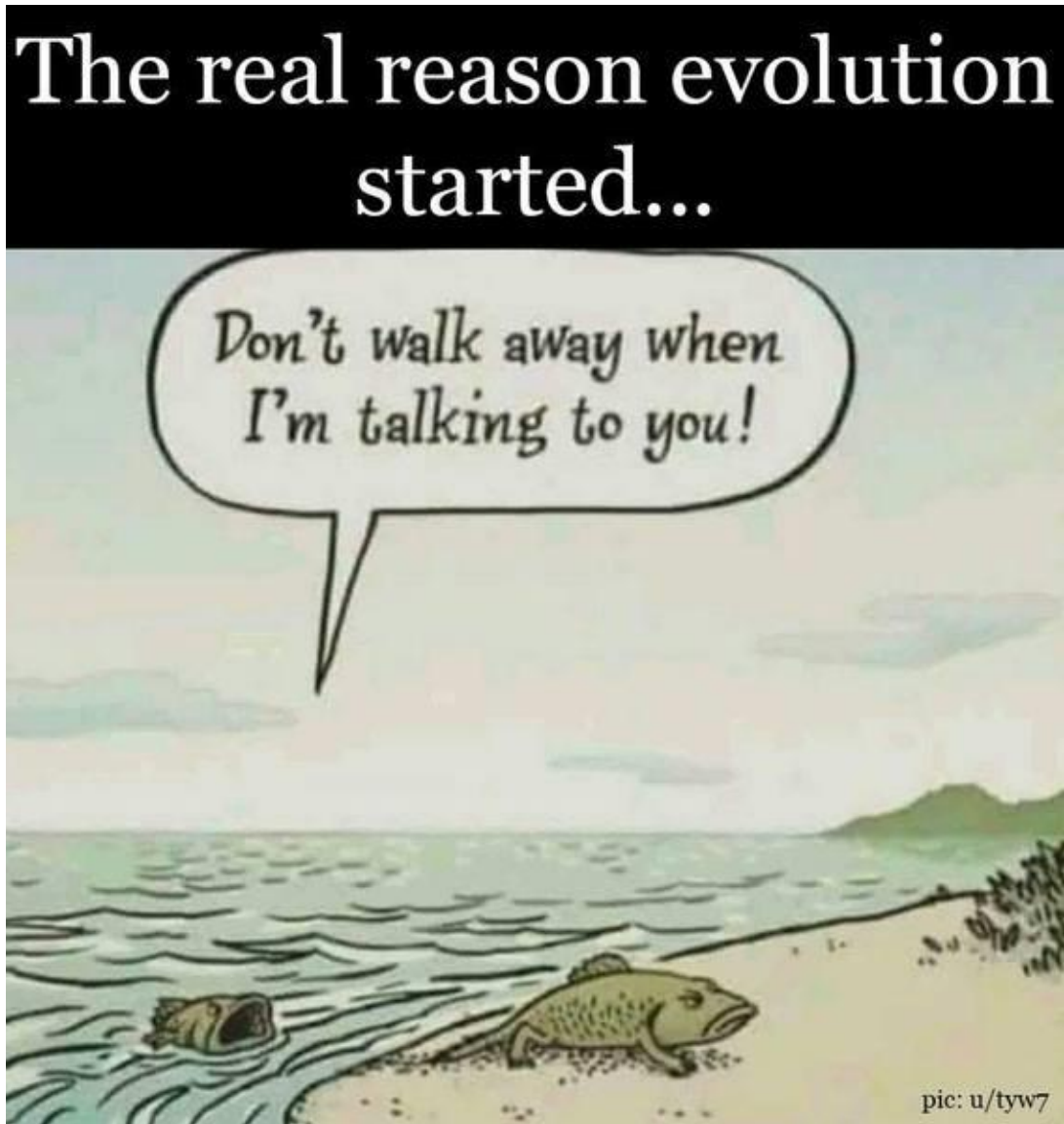
Mark Sherburn, Eastern Fish & Game Officer.

EDITORS NOTE

A request and a thank you.

Firstly Thank you to everyone that sends me in pics and or reports, they are much appreciated. And a Request to everyone out there please send me more! ☺

FISHING FUNNIES



(Opinions expressed in this Newsletter are those of the individual contributors and not necessarily those of North Shore Flyfishers Incorporated)

MEMBERS FEEDBACK

We, your committee, are always trying to give you what you want.

But are we??

In order for us to do our job properly we need to have your feedback, positive or negative. For example, have you been on a club fishing trip? Did you enjoy yourself? What would you change, if anything? Club nights – what would you like to see more of? Less of? In short, talk to us.

The contact details of all your committee members are listed at the end of every newsletter. So if you have something on your mind let us know.

Thank you - Your committee

NSFF CLUB MERCHANDISE

Cap – \$15.00 Inclusive of GST

Green or Beige, one size fits all, with embroidered badge.

Embroidered Cloth Badge - \$7.50 Inclusive of GST

Brushed Brass Metal Pin Badge - \$12.50 Inclusive of GST

If anyone is interested in purchasing these products please either place an order at Club Nights or at Hunts Sports.

Meetings held the 3rd Tuesday of each month at 7.30pm:
Milford Cruising Club, 24 Craig Road, Milford, North Shore City

NORTH SHORE FLYFISHERS EXECUTIVE

Club Patron – Dave McLellan

President - Dave Symes	486-6257	Takapuna	dssymes@xtra.co.nz
Secretary - Dennis Smith	376-3375	Herne Bay	de.smith@xtra.co.nz
Treasurer - John Cuthbertson	413-6993	Greenhithe	john.cuthbe@gmail.com
Magazine - Duncan Frew	021 648 956	Torbay	iconpromote@gmail.com
Committee - Leon Bathurst	0272 588 824	Takapuna	borntobuild@hotmail.co.nz
Members Barrie Barnes	021 925 006	Glenfield	barrie@flyfishinginxs.kiwi
John Dernie	0272 288 616	Glenfield	dernie@xtra.co.nz
Simon Hoole	021 037 6047	Northcote	hoolesimon@yahoo.co.nz
Mike Martindale	489 1082	Takapuna	miketmartindale@gmail.com
Maurice Parlane	021 650 692	Northcote	maurice.p@newwayz.co.nz

North Shore Flyfishers Incorporated: P.O. Box 31-387, Milford, North Shore City