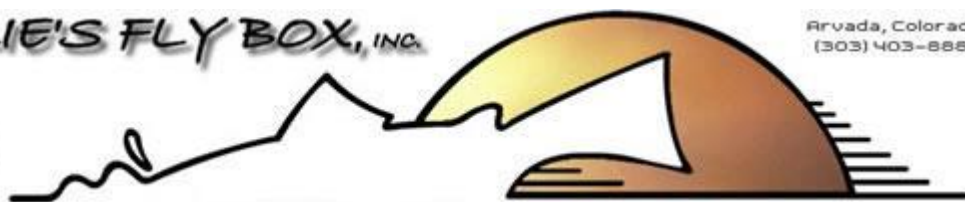


CHARLIE'S FLY BOX, INC.



Arvada, Colorado
(303) 403-8880



Jujubee Midge



Fly Patterns brought to you by Charlie's FlyBox

© All images, slogans and content are strictly copyrighted and may not be used or copied without permission.

Charlie Craven and Charlie's FlyBox, Inc.

[print this page](#)

step: 1

Pattern Description

I developed my Jujubee Midge several years back when I was guiding on the South Platte River. Thread midges and the like are productive patterns in Cheesman Canyon, but I needed an edge for these ultra-selective fish. The Jujubee came about quite by accident one day. I was tying braided barracuda flies for an upcoming saltwater trip using SuperHair for the bodies, when I looked at the SuperHair in a different way. What if I wrapped it around a hook to form a midge body, rather than tying it on in hanks as for the cuda fly? I dug out a few smaller hooks and went to town mixing and matching the SuperHair colors to create different color patterns with contrasting ribs. The result is what you see here today. The SuperHair material is very easy to work with, inexpensive, and quite durable. I have a couple different methods for tying the Jujubee. The method I show here is to tie the abdominal section using white thread, then whip finish and clip the white and start black thread at the front of the abdomen for the completion of the thorax. Another method that you can use is to stick with the white thread all the way through, but color a few

Materials Needed:

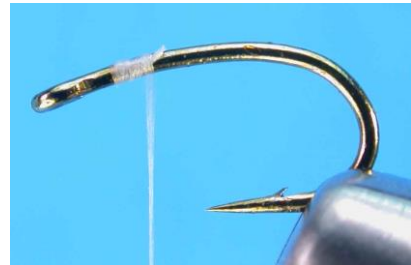
Hook: TMC 2488 #18-24 Thread: 10/0 white, colored with black marker for thorax and head or switch to black 10/0 thread for the thorax as shown. Must use white thread under abdomen to allow true color of Super Hair to show through. Abdomen: Super Hair, color combination of your choice. Two strands of primary color and one strand of contrasting rib color. My favorite color combinations are two olive and one black, two chartreuse and one black, two black and one white and two red with one white. Wingcase: White Umpqua Flouro-Fiber Thorax: Black tying thread or white colored with black marker. Wingbuds: Remaining stubs of Flouro-Fiber from

inches of it with a black Sharpie marker before building the thorax and head. either way works well, but I find that when tying a larger batch, it is easier to go through and tie all the abdomens with white thread first, then come back and complete the fly with black thread. Tie up a few jujubees and stash them in your box. Midge larva and pupae are so prevalent that it is never a bad bet to start off with one on your day astream. I find Jujubees particularly effective in the winter and spring, but have had several mid-summer trips saved by my old reliable Juju. And because I'm sure you're wondering, the Jujubee got its name from my daughter, Julie, who we've called Jujubee since birth. It all starts to make sense now...

wingcase, pulled back along sides of thorax like legs.

step: 2

Attach thread at rear of index point (one eye length back from eye).



step: 3

Tie in three strands of SuperHair at the back of the index point. In this case, I have tied in two black and one white strands. The order in which they are attached does not matter, as they will all line up once you start to wrap them later.



step: 4

Wrap back over all three strands of SuperHair to about halfway down the bend of the hook. Return the thread to the rear edge of the index point. Take care to keep the thread underbody VERY slim in these steps.



step: 5

Begin wrapping all three strands forward as one unit. Be sure to keep the Superhair strands from overlapping or twisting as you wrap. On the first turn, pull all three strands straight up to get them on top of the thread base. resist the inclination to wrap them perpendicular to the bend; they need to jump up onto the thread base to line up.



step: 6

Continue wrapping all three strands forward all the way to the back of the index point and tie them off there.



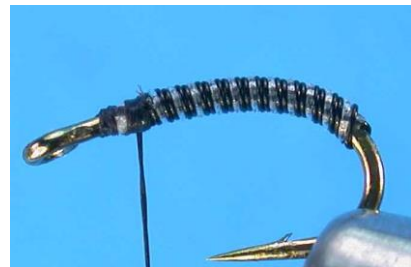
step: 7

Clip the butt ends of the SuperHair and whip finish the white thread at the back of the index point. Clip the thread.



step: 8

Reattach black thread over the white thread tie down as shown.



step: 9

Cut about a dozen fibers from the hank of Flouro-Fiber and tie them in at the front edge of the body with a few turns of thread. Do not travel too far back over the Flouro-Fiber.



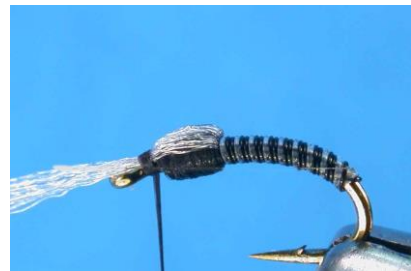
step: 10

Use the black thread to build a bulging thorax over the front ten to fifteen percent of the hook shank. Be sure to leave the index point area clear of any buildup though.



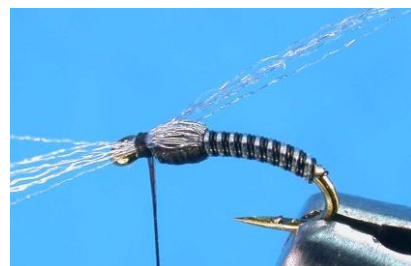
step: 11

Pull the Flouro-Fiber forward over the top of the thorax and tie it down with two tight wraps at the index point.



step: 12

Divide the Flouro-Fiber that is now sticking out over the hook eye into two equal clumps. Pull one half back along the far side of the hook and bind it in place with a couple turns of thread.



step: 13

Pull the other half of the remaining strands back along the near side and bind them down as well.



step: 14

Build a smooth thread head to cover the tie down area and whip finish the black thread. Clip the thread.



step: 15

Clip the wingbuds (the remaining strands of Flouro-Fiber) even with the back of the wingcase.



step: 16

Bleeding Jujubee Tied with one strand each of red, black and white SuperHair. All other components are the same as the original. Try this one on a larger hook for chironomids in stillwaters!



step: 17

Chartreuse Jujubee: Two strands chartreuse and one strand black SuperHair.



step: 18

Olive Jujubee: Two strands olive, one strand black.



step: 19

Red Jujubee: Two strands red, one strand white SuperHair. Thorax is tied with red thread in place of the black thread used on the originals.



step: 20

Brown/Black Jujubee: One black and two brown...



step: 21

Blue/Green Jujubee: This is a new one, based off the success of the Deep Blue Poison Tung. Both the blue and the green show up well in deep and/or dark colored water...so far, so good. Two blue and one chartreuse.



step: 22

Brown Jujubee: Two Brown and one white...great for the San Juan.



step: 23

Clear/White Jujubee: Two strands white and one black...very translucent, crosses over for mysis too.



step: 24

...or maybe this is the clear one...oops!



step: 25

Zebra Jujubee: This is the one detailed above. Two black and one white, side view.



step: 26

Here's the Jujubaetis, found elsewhere on the site. A clear variation on the theme that works great anywhere you find baetis...which is everywhere!

