



THE FLYFISHER NEWSLETTER

November 2024

IN THIS ISSUE

- Page 1 - Presidents Report
- Page 2 - Fishing Report
- Page 5 - What's Happening – Club Nights / Events
- Page 9- Club Trips
- Page 13 - Tips and Tricks
- Page 13 - Club Facebook Page
- Page 13 - Fish And Game Auckland / Waikato Reel Life October
- Page 16 - Fish And Game Eastern Reel Life November
- Page 18 - How To Handle A Tough Day On The River
- Page 23 - 2024 Auckland/Waikato Fish & Game - Spring Flyer
- Page 45 - Dry And Dropper Tuition Clinic
- Page 48 - General Club Information Plus Committee Members Contact Details

PRESIDENT'S REPORT

As I have done in my two previous articles, I have once again made reference to another NZ topographical map which I obtained from my old friend and retired fishing guide, George Moore. While most cellphones now have GPS location and recording capacity, there is nothing quite like laying out the fully annotated paper version to appreciate the scale of a district.

This map is part of the NZMS 260 series and is SHEET T11 **Whitianga**. While Whitianga and the surrounding area of Mercury Bay is generally regarded as a “Marine Playground”, George indicated a number of areas where he had caught rainbow trout and while modest

in size, their presence provides an opportunity to practice the “gentle art of fly fishing” away from the busy coastal beach environment.

A number of rivers and streams drain into Whitianga harbour from their headwaters in the Coromandel Range and it is entirely possible that during flooding events, fish may well be washed down to the harbour upper reaches before returning to a different river from which they came. In other words, any and all watercourses are probably worth checking out.

The No 309 road which extends from Coromandel across the ranges towards Whitianga, follows on the eastern side, the course of the Mahakirau River. George makes special mention of this river which has several contributing side streams and also a confluence with the Kaimarama River which runs through a valley to the south.

To the southern end of Whitianga harbour, George marks sections of three different rivers where he caught fish. The main one is the Waiwawa River which, in its lower area, follows the Tapu-Coroglen road. Two major tributaries, each accessed via eponymously named roads, are the Rangihau Stream and the Kapowai River.

Given that the area is more often than not, associated with summer holidays, it might be worth considering exploring some of the deeper sections of the rivers/streams with a mask and snorkel, particularly in the cooler, bush-clad valleys where fish could be avoiding the warmer temperatures.

On a different note, the club’s “Stillwater” tranche of the Rodd and Gunn competition, is being held at Lake Otamangakau on Saturday 30th November. There are still places available for participants and remember, it is a “friendly competition” focusing on fun and enjoyment. Anyone interested in coming along should contact me ASAP by ph: 021673045 or email: dssymes@xtra.co.nz.

Dave Symes
President

FISHING REPORT

Auckland / Waikato

Lots of reports this time. First, Barrie has been up some exploring in the Northland waters and has found some fun!



Above: A fun Rainbow from the Kaihu River, not far from the Kai Iwi Lakes. Below: Barrie's new favourite spot on the Kaihu. Photos courtesy of Barrie Barnes.



Second, the Coromandel. The Dry and Dropper Tuition Trip on the Ohinemuri with Aaron West was the weekend of the 2nd / 3rd of November and they had a ball, catching a number of fish and learning some great tips from an absolute master. On the Same weekend Andrew

Mac made his way to a different part of the river system and caught some beauties, including this spectacularly marked Brownie.



Photo courtesy of Andrew MacPherson.

Also, I had managed to get down there with my Nephew a couple of weeks earlier and we managed some nice fish, evenly caught using an attractor dry fly and a size 16 pheasant tail variant. It is great to have the Trout 'looking up' again!

Finally, the Waikato area. A visit last weekend to a Waipa tributary started well and promised a very successful day, with 3 fish taking the fly, and another goodie spotted, in the first 2 pockets. Alas, that was all she wrote as far as catching was concerned, but the fishing was excellent. A hot summer-like day and a river to ourselves to explore and relearn after a number of years away.

Rotorua

No report from the Rotorua area but the tributaries open again on December 1st.

Taupo

There are still some odd runs of fresh coming into the tributaries but the vast majority of fish are now previous spawners. The good news is that they are eating heavily to put condition back on, and because there have not been any major floods there is still plenty of insect life throughout the rivers.

Saltwater

No reports here as well, but the Rat Kings will definitely be arriving soon. So hitting the marker buoys could be a good call from now on.

Fishy Tales

- If you do have a report, success story, or anecdote to share then just send it to iconpromote@gmail.com . Happy Fishing and Tight Lines – Freddy Da Fish.

LAST CLUB NIGHT

Last month we had Dave talking about fishing Lake Otamangakau. It was a very enjoyable Meeting and thank you once again Dave.

NEXT CLUB NIGHT – 20th NOVEMBER 7.30 PM

This month we have Brian Young talking to us. Brian is a fly fishing Guide and was the Auckland Fly Clubs President for a number of years. He has a wealth of Fly Fishing knowledge and this is sure to be an enjoyable evening. We hope to see you all there.

Also, don't forget, we have changed the Club Nights to the third Wednesday night of the month from now on.

WHY WE FISH

Over the years,' he once wrote,' great minds have brooded about whether fishermen were crazier than golfers.' There is much to be said for both sides. Golfers spend hours knocking an innocent little ball across the landscape, often getting wet and numb in the process, and return home with nothing to show for their efforts. Fishermen, on the other hand, spend hours dragging an innocent herring through the water, often getting wet and numb in the process, and return home with nothing to show for their efforts. On successful days in both sports, joy reign supreme because the participant has triumphed through enormous sill, but at least the fisherman's rush comes from outsmarting something that has a nervous system.

Tom Brennan - Moose Droppings and Other Crimes Against Nature

CHANGES TO CONTACT DETAILS

Committee members organising club trips and similar events are finding that the phone and email information that we hold for some members has become out of date. If you have changed your address, landline number, mobile number or email address in the last year or so and have not passed the new details on to NSFF, could you please advise Barrie Barnes by email, his email address is barrie@flyfishinginxs.kiwi .

FISHING BUDDIES SOUGHT

The intention is to display a list of names of Club Members that are keen on finding a 'buddy' to go fishing with, either on a regular basis or just for a day. In essence it's a fly-fishing dating service...

Name	Availability	Contact Details
Ron Blair	Anytime, has a 14.4 Marco with 60hp etc Evenrude for serious fishing Salt or Fresh	home 09 834 8841 mobile 0275 006 336 ron.blair@xtra.co.nz
Les Rose	Retired and is happy to take another person fishing during the week.	home 09 4183634
Graham Carter	Lives in Hamilton, keen on weekday / mid-week trips.	021 026 00437 07 855 1833
Lloyd Altham	Has 12' Pontoon boat /15 HP Honda. Available most time, but prefer weekdays.	Mob. 021 0295 9167 Home 09 420 3120 email-lloyd@skysupply.co.nz
Gary Bolstad	Keen to get out Stream, Lake or even Saltwater fly-fishing. Has both Fish & Game and Taupo season licences so keen to go almost anywhere. Retired so free to go most of the time.	Mobile 022 379 3070 gd.bolstad@gmail.com
Derek Robinson	Retired available most times keen to do Waikato streams and most other things.	Ph 4437311 Mob: 0212 595 371 pamanddek@outlook.com

CLUB TROPHIES

Brown Trout Trophy – This is awarded to The Heaviest Brown Trout caught by a Club Member during the year – 1st April to 31st March. Current holder is **Fikrit Chinassi**.

Chain Snore Trophy – A fun award given immediately after any Club Trip to the person who has done the ‘funniest’ thing over the weekend. If nobody has had anything like this happen it may be awarded to the worst snorer. Current Holder is **Tim Ross!**

Ian Hunt Memorial Trophy – Heaviest Trout caught fly-fishing by a Club Member during the Pupuke Challenge Competition. A competition run every year to promote the Lake Pupuke fishery. This was not held this year. Current holder is **Lucas Bathurst.**

I Love Flyfishing Trophy – Awarded to the Club Member who has caught the most species of Saltwater fish fly-fishing over the year – 1st April to 31st March. Current holder is **Johan Kok.**

Rodd And Gunn Trophy – This is the Club Competition which takes place over two days. One day on a Lake and one day on a River. The Winner this year is **Johan Kok.**

The Lake part of the competition has its own Trophy, the **I Love Flyfishing Stillwater Trophy.** The winner of this year’s event is **Johan Kok.**

The winner of this year’s River section is **Duncan Frew.**



Every great fishing trip requires fuel. Lunch during the Dry and Dropper Clinic on the Ohinemuri overlooking the river. Photo courtesy of Andrew Todd.

QUOTABLE QUOTES

The flytier who practices with the flies he or she has created soon realizes that there can be a large degree of difference between a fly pattern that catches the admiration of anglers and those that catch trout.

Ken Iwamasa

BROWN TROUT TROPHY” COMPETITION RULES

Winning fish will be determined by weight.

Verification by partner where possible and/or by photograph.

Details to be provided to any committee member.

Competition period April 1st to March 31st . Prize awarded at AGM in April.

Winner’s name and weight of fish to be published in May club newsletter.

NSFF CLUB SALT WATER FLY FISHING COMPETITION RULES

The “essence” of the competition is to encourage club member participation and in the process, to award a winner’s trophy to the individual who catches the greatest number of salt water species. It will run from 1st April in one year to 31st March in the next year with the trophy awarded at the following AGM. For the full rules please refer to the Club Website www.nsff.org.nz

NORTH SHORE FLYFISHERS DVD LIBRARY

Over the years the Club has purchased some videos and been very fortunate in having a number more donated for Club Members use. There is almost certainly something there that will appeal to you. So if you would like to borrow one just let any Committee Member know (contact details are on the back page of this Newsletter).

Club Videos

Flyfishing with Dave McLellan June 2015 (15 DVD’s)

New Zealand FlyTying (with John Giacon) A Tight Lines Ltd Presentation (2 DVD’s)

Tie A Fly with John Morton The Master Fly Tier

Blue Water Fishing Techniques (ITM Fishing Show) Matt Watson

New Zealand Trophy Waters (Volume 6) Bruce Masson A Deep Stream Production

New Zealand Trophy Waters (Volume 7) Bruce Masson A Deep Stream Production

Running Down The Man A Felt Soul Media Production

Advanced Fly Casting Doug Swisher Essence of Fly Casting
Chasing Silver (Tarpon fishing in Florida) Howard Films. Com
How to Succeed on Reservoirs Part 1 Boat Tackle, Tactics and Flies
How to Succeed on Reservoirs Part 2 Boat Tackle, Tactics and Flies
How to Succeed on Small Stillwaters Part 2 Stalking Patterns and Techniques
NZ Fly Fishing Adventures Going Remote Mike Kirkpatrick
NZ Fly Fishing Adventures Going Remote Volume I Nelson District-Mike Kirkpatrick
NZ Fly Fishing Adventures Going Remote Volume 2 West Coast-Mike Kirkpatrick
NZ Fly Fishing Adventures The Distant Browns of Emerald-Mike Kirkpatrick
The Manic Guide to Fly Casting Rene Vaz
Fly Fishing in NZ
Stealth with a Fly-NZ Wilderness waters Dean Bell Fly Fishing
SoulFish 2 Global fly fishing Adventures with April Vokey and others
Gulf Harbour Outdoors with Geoff Thomas NZ fly fishing for Trout and Salmon
Salt Water Fly Fishing Game Fishing
Bugs of the Underworld Lisa Cutter
NZ Fly Fishing MP4s Youtube Video's (4 discs)
Snapper Secrets (vol 2)
Fly Fishing in NZ (fishing Clips from Mobil Sport on TV3)
How to Fish Rapala Lures
Essential Patterns with Oliver Edwards Vol 1
Fly Fishing For Reservoir Trout (at Pitsford) Bob Church
Trout Secrets with Geoff Thomas
Fishing in Fiordland
Wee Wets and Small Drys

CLUB TRIPS 2024 – 2025

February –Ngongotaha River and Rotorua Lakes –FEB 2025
March – Lake Otamangakau – MAR 2025
May – Ngongotaha River and Rotorua Lakes –MAY 2025
July – Tongariro and Tauranga Taupo – JUL 2025
August – Tongariro – Club River Fishing Competition – AUG 2025
September – Tauranga Taupo – SEP 2025
November – Lake based Club Competition Trip – NOV 2024
December / January – Tuition weekend (Held if enough 'novice' anglers are interested)
December – Lake Otamangakau – NOV 29th 30th 1st 2024

The NSF committee arrange various Club Trips over the year to different parts of the country. If you would like to be involved, or have an idea for a trip please let one of your committee know.

NOVEMBER CLUB TRIP TO LAKE OTAMANGAKAU

I am proposing the weekend of 29th 30th November 1st December (Friday, Saturday and Sunday) with a number of us arriving on Thursday the 28th.

While it is predominately a boat fishery, the Te Whaiiau (inlet) canal which can be fished from the shore, and particularly the “holding” area immediately above the road bridge, offers a big range of casting positions.

Just be aware that with an altitude of some 2,000 feet above sea level, the conditions can go from warm and pleasant to bleak very quickly!

By December, the Trout are in ‘eating’ mode, with lots of insect activity, providing some fantastic fishing activity. The fish are in fantastic condition, big, fat and powerful!
Costs will be \$55 per person per night.

The Accommodation is your own little room with 2 beds, 1 for sleeping and the other for your gear.

There are shared cooking facilities.

I have “penciled in” 8 cabins at Tongariro Holiday Park so if anyone is interested, please let me know ASAP.

Dave Symes - Ph: 09 486-6257 - Email: dssymes@xtra.co.nz



Two Club Members on a previous Club Trip fishing into a stunning evening. Photo courtesy of Simon Hoole.

FEBRUARY CLUB TRIP TO NGONGOTAHA AND ROTORUA AREA

This February Trip to fish the Ngongotaha River and the Rotorua region is on the weekend of Friday 21st , Saturday 22nd , Sunday 23rd February. We will again be staying at the Paradise Valley Lodge. Costs will be \$125.00 each, which will cover 2 nights' accommodation in the lodge and a BBQ on Saturday evening. If you want to come down on the Thursday, as many of us do, then simply add \$55 to make it \$180.00.

Also, a variety of private rooms are available as well.

If you are keen just let me know which nights you can make ASAP and then pay your money to the Club in any of the normal ways.

- internet banking to the Club's bank account: North Shore Flyfishers Incorporated ASB A/c #: 12-3209-0190179-00 (please include your name and the word Ngonga as a reference);
- Or by Cash on the November, December or February Club Nights

Duncan – 021 648 956 – iconpromote@gmail.com

This Trip is almost full so please let me know ASAP.

JOKE OF THE MONTH

Six retired Irishmen were playing poker in O'Leary's apartment when Paddy Murphy loses \$500 on a single hand, clutches his chest, and drops dead at the table. Showing respect for their fallen brother, the other five continue playing standing up.

Michael O'Connor looks around and asks, 'Oh, me boys, someone's got to tell Paddy's wife. Who will it be?'

They draw straws. Paul Gallagher picks the short one. They tell him to be discreet, be gentle, don't make a bad situation any worse. 'Discreet??? I'm the most discreet Irishmen you'll ever meet. Discretion is me middle name. Leave it to me.'

Gallagher goes over to Murphy's house and knocks on the door. Mrs. Murphy answers, and asks what he wants.

Gallagher declares, 'Your husband just lost \$500, and is afraid to come home.'

'Tell him to drop dead!', says Murphy's wife.

'I'll go tell him.' says Gallagher.

NEW CLUB MEMBERSHIP KEY RINGS / CARDS

For a long time now Members have been asking for a more permanent Membership card than the old paper versions. So we will be using the metal Key Rings / Cards shown below. They will have the Club logo on one side and on the other your name and year of Membership. They can be updated with new engraving every year.



TIPS AND TRICKS

At an earlier Club Meeting we had a session all about Tips and Tricks that we might choose to use with our fishing. With that in mind we will use this section for any helpful little Tips that anyone may have that can benefit us all. So, if you have a quick Tip that you are happy to share just let me know on iconpromote@gmail.com .

1) If glare on the water is causing you problems and making it hard to see your dry fly or your indicator try moving your casting position. Quite often a simple change of position, sometimes only a few metres, can completely remove the glare issue.

CLUB FACEBOOK PAGE

Some of you will already know that the Club has a Facebook Page. It has been underutilized for a while and this is just a reminder to those who already know and information for those who didn't know until now. The link is below, and also on the Clubs Website <https://nsff.org.nz/>

<https://www.facebook.com/groups/217979378948826/members>

Please do join the page and post away, it really is a case of every post will encourage others to post and before we know it the Club will have a thriving online presence.

FISH AND GAME AUCKLAND / WAIKATO REEL LIFE OCTOBER



The Waikato is full of fish it is time to get out there!

The Waikato River is fishing well so it is time to take advantage of trout on your back door if you live in the Waikato. The Hunting and Fishing 2024 Lower Waikato River trout contest had some huge browns entered including Steven Sharpe's 3.17 kg brown trout that landed him first place in the competition. Tracey

Farrar won the women's division with a 2.10 kg brown, and the junior division was won by Dylan Farrar 2.14 kg brown. Staff asked the competition organisers about tips to help

new anglers and where the big fish were caught. The response was not to be afraid to fish low on the river as fish were caught as low as Les Batkin Reserve next the Tuakau Bridge. In terms of gear, soft baits still dominate the competition and are a great way to catch trout in the Waikato.



Dylan Farrar with three nice Waikato River brown trout.



Steven Sharpe 2.5 kg brown trout from the Waikato River.

Please keep an eye out for the Spring flyer in your inbox

Staff are busy working on our spring flyer and there will be some important information for anglers so please keep an eye out in your email. If you would like a flyer and don't check your email, please contact the office and request one.

Rule Changes

Auckland/Waikato Fish and Game Council will be updating our fishing rules and are calling for any suggested changes. This round of potential changes will be quite unique as

we will be considering a **national push to simplify the fishing rules** to make things easier for anglers including suggestions like:

1. **Year-round season on most rivers (excluding spawning areas)**
2. **No restrictions on gear (spin, bait and fly on all streams)**
3. **2 fish daily limits for all rivers**

The full list of suggested changes will be outlined in the spring flyer and a survey will also be emailed to licence holders who have given email details. If you know any anglers that do not receive correspondence from Fish & Game that would like to participate, they can call our office to be added to the mailing list. If you would like to make suggestions on the rule changes to be considered by council for the next three years, please email us at adaniel@fishandgame.org.nz or post your suggestions to 156 Brymer Road, RD9, Hamilton 3289 by **31 November 2024**.

FISH AND GAME EASTERN REEL LIFE NOVEMBER

The season has kicked off with a bang in the Eastern Fish & Game region. Hundreds of anglers flocked to the Rotorua lakes to fish, relax and meet up with friends and family on what has become a popular tradition in the region.



And the fish didn't disappoint either! Lake Tarawera in particular, produced the best opening day fish we've seen in over 20 years with hatchery fish released during autumn 2023 coming in at 583mm and 2.45kg. This is a whopping 600g heavier than the last opening day. Lakes Rotoiti and Okataina also excelled with both producing fish that exceeded the previous year's catch.

With settled spring weather warming local waters we are beginning to see good browns cruising the flat shallow water on Lake Rotorua. Some excellent fish are being caught at the stream mouths between Ngongotaha and Hamurana and this is a trend that will continue to develop as the water warms. The trigger water temperature for these impressive fish to begin running into the streams is normally about 19 degrees Celsius – so keep a close eye on lake temps through November. [Here's a link](#) to the Bay of Plenty Regional Council monitoring which includes water temperatures.

Spring is also the time when the smaller, and lesser-known lakes fish well. Locations such as Okaro, Ngapouri, Rerewhakaaitu can provide excellent sport either from the shore or by boat. Insect activity is on a rapid rise as we come out of winter. Damsel and dragon fly larvae and chironomid buzzers are all useful ways of targeting hungry fish around the margins.

Don't forget too that smelt are a key food source at all times so keep the box topped up with a few Grey Ghost type flies, silvery Toby's and lighter coloured Tassies.

Insect activity is also on the rise in all of the streams and rivers of the region and having been blessed with settled weather the rivers are running low and clear.

Do The Trout Keep Fooling You?!

Come along to our Boat Fishing How-to Talk and Demonstration, Saturday 4th of January 2025 at the hatchery at 1130 Paradise Valley Rd, Ngongotaha. It's free to attend and covers off all the basics of catching trout from boats on our lakes. Keep an eye on our [Facebook](#) page for details.

Datawatch Tagged Trout

Tagged trout can now be entered online. Entries go into the draw to win one of 10 free whole-season fishing licences: <https://www.surveymonkey.com/r/QCH5ZR6>

Eastern Region Fishing Diaries – All Lakes And Streams

Fill in your fishing diaries here to help us manage the Eastern Fish & Game region. Participants go in the draw to win a \$100 voucher from Kilwell: <https://www.surveymonkey.com/r/QRSD7D3>

HOW TO HANDLE A TOUGH DAY ON THE RIVER

Article taken from the <https://www.manictackleproject.com/> website.

New Zealand fishing legend and Professional Guide, Chris Dore, lends some advice on what to do when the fish just ain't biting.

TOUGH DAYS

We've all been there. A long awaited day out on the water however nothings doing. At all. Nada. "I'm sure this river has trout in it?"

It doesn't seem like it today...

As a professional fly fishing guide we have to deal with these days more often with most simply due to the law of averages - spend every day on the water and some will suck. However we spend a lot of time learning to deal with these days and ways to turn things around, even to just get in with a fighting chance.

Not every day will be a blue sky day with fish out in the open sipping dries. No one can control the weather. No one can make the fish feed. However here are a few ideas to make the most of those rougher days.



ADJUST EXPECTATIONS.

Unless something drastically changes you probably won't net a dozen fish on days when the river just isn't playing ball.

Steve and I headed into the hills early on a forecast fine and sunny day to make the most of summertime terrestrial action. By 10am the cloud was intensifying rather than burning off as predicted and consequently nothing was moving out to feed. We broke our expectations into a new series of successes:

- 1) Simply find just one fish
- 2) Get our fly to him without spooking
- 3) Get the eat
- 4) Land him.

Then reset and look for just one more if we got lucky.

Fortunately for us we ticked the first four off soon after and while the river trumped us for the remainder of the day we had beaten the conditions on a day when very few, if only just that fish was out looking for food.

FORM A PROCESS

Are you going to spend your day working the water blind or are you going to cover the miles and look for those few fish that are out? If working the water pick a trusted method and work it methodically through the absolute best of the water, and fish it well. Chances are the fish aren't feeding hardcore and may take a few presentations to move to your fly so if nymphing a riffle, grid it out and work each section carefully. If banging deep cuts with streamers work carefully, covering new ground each cast but close enough for a fish in the last area to have the opportunity to again chase.

If sight fishing and walking the miles don't blow your eyes out looking across the entire river. Choose the most likely water and position yourself to best look into it. Staring into glare and giving yourself headaches is just stupid.

FISH CLOSE TO COVER

When fish aren't feeding, they are in cover. Like us. Do we hang around the kitchen between meals? If there's no food they won't be there, so use this logic wisely on days whenever the river isn't showing out. Work your flies down that deeper side of the riffles and closer to that drop off. Drop your dries along the far / bank side of that current seam. Move along that deep, high bank rather than walking that easy shallow beach.

If there isn't much food drifting then maybe look towards that heavy white water where nymphs may get involuntarily washed free?

“At home in the foam” only applies when there's enough chow there to draw the fish into that position. Otherwise, they're in cover.



CHANGE WATER TYPES

There are many different types of water on any given stream and if you're just fishing the pools, and the fish aren't in those pools then your day is going to suck. Search out the heavy runs, maybe the cut banks. Look around the tail outs or the outside edges of the riffles. Look at shallower, deeper, sunny stretches and those in the shade. Mix it up and go searching for those fish. If in doubt, up sticks, clean your gear and relocate to another stream of a different nature. Complacency won't get you anywhere if the fish just aren't feeding, you simply need to find those who might be.

FISH DEEP

That cute wee 2mm bead head may rock it throughout that shallow riffle head when the fish move into their pre hatch, but it's a far cry to expect that same nymph to pitch deep into the run by itself if the fish are holding down. If they are most likely on mayfly nymphs, then you should give them a mayfly nymph, not switch to a stonefly or other alternative just because you need weight.

Switch your flies about according to flow and depth on tough days so you know that you are getting right down in each bit of water you hit. [Dores Depth Control PT](#) are a size 14 do-it-all pattern in four different weights so you can make sure you are feeding the fish as the river depth, or flows change. If that fish isn't hitting that 2mm bead, switch to a 2.8. Still nothing? Try the 3.5mm bead. An extra foot of depth can make all the difference when fish aren't lifting.



Dore's Depth Control PT in action

STREAMERS

Chuck ‘em some meat!

Sometimes if they just aren’t feeding you need to make them attack. Play on their territorial instincts. Look for spill ins, drop offs, deeper guts and undercut banks - anywhere fish will make their own, and pitch a streamer. And I don’t mean a small streamer - give them something to chase! [Mr Glisters](#), [Sex Dungeons](#) and [mini dungeons](#) all have that pulling power, and don’t be subtle! Smack them in and rip them back. Excite the fish into chasing.



Sex Dungeon – Black

So be methodical and keep on working the water on days where very little is happening. If the same old, same old isn’t producing, try something that may!

ABOUT THE AUTHOR:

Chris Dore is a battle-tested fly fishing guide with over 20 years of professional guiding experience, battling the demanding, ever-changing conditions that New Zealand rivers throw at you.

Chris became one of the first New Zealanders to successfully pass the internationally recognised Federation of Fly Fishers Certified Casting Instructors examination and has since taught many thousands of anglers to up their skillset.

For more in person and on river fly fishing advice and upskilling why not [book Chris for a day or three?](#)

2024 AUCKLAND/WAIKATO FISH & GAME - SPRING FLYER

Welcome to a new fishing season, please make sure you read about how to prevent the spread of the Gold Calm and the proposed rules for fishing as there are some big changes proposed for our fishing regulations. Fish & Game look after our waterways for current and future generations with no taxpayer funding so please do your part to help by purchasing a fishing licence.

[Buy your fishing licence online](#)

This yeas flyer includes:

- Season Prospects
- Gold Calm biosecurity update
- Fishing access fund hits \$25,000
- 5 Spots to get started trout fishing in the Auckland/Waikato Region
- 5 Perch spots in the Auckland/Waikato Region
- RMA Update (how we use licence money to protect waterways)
- Fishing Regulation Consultation
- New council
- Access update

Season Prospects

Spring fishing in the Coromandel is thriving, with an abundance of trout being caught in streams for the first time in a decade. This surge is attributed to the cooler weather patterns of the past couple of summers. Sport Fly Fishing NZ recently held a competition on the Ohinemuri River, where anglers landed and released an impressive 312 trout in just six hours, three times the catch of last year's event.

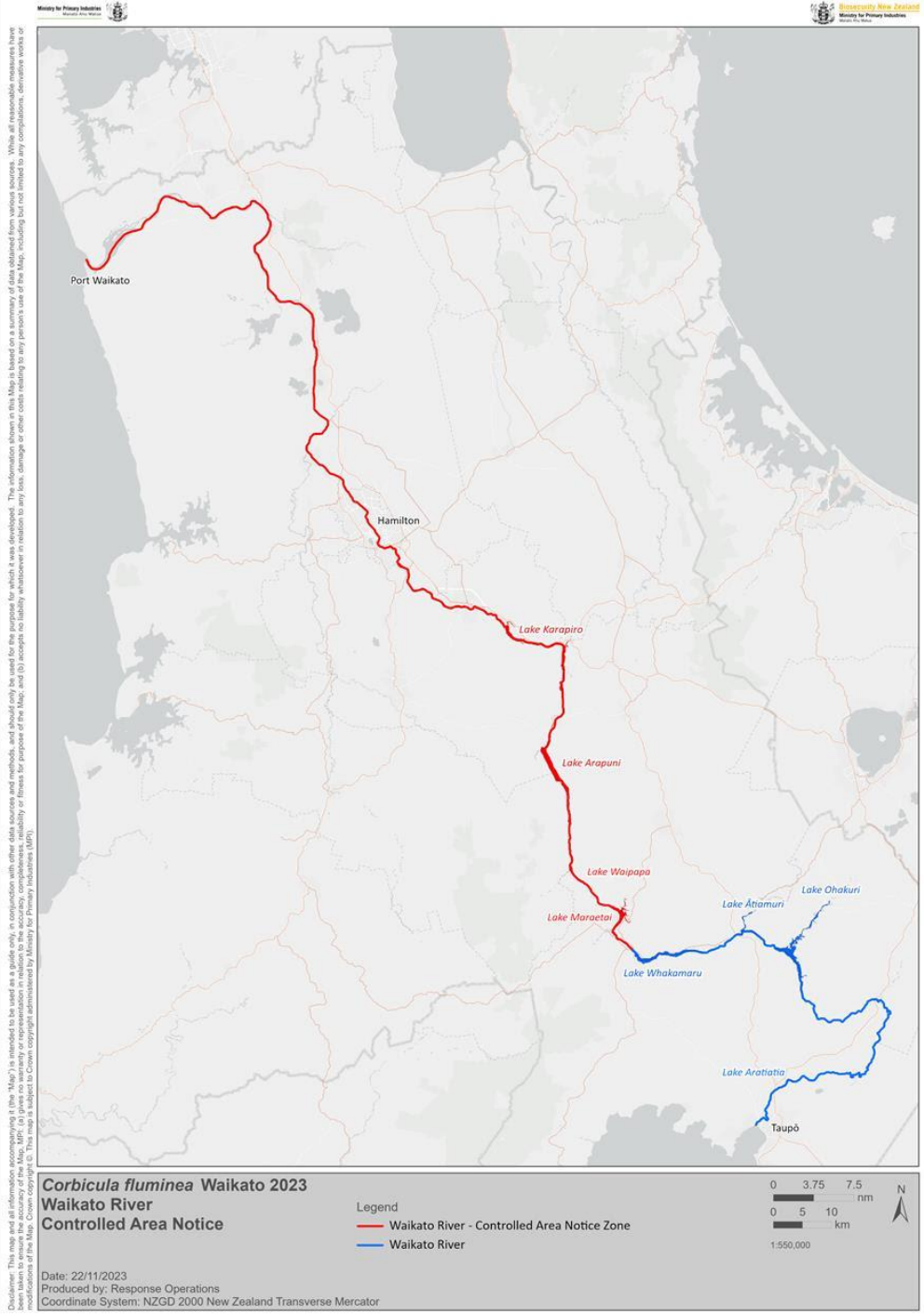
For those in the Auckland/Waikato region, now is the ideal time to explore lowland rivers like the Waikato and Coromandel, as these waters struggle when temperatures rise. Lake

Arapuni is also producing good catches, and anglers are encouraged to report any tagged fish through our [online reporting page](#). Please provide the tag number, length, and weight if you keep the fish, accurate measurements are crucial for our sterile fish and wild fish monitoring projects. Our tagging teams have been active on the Mangatutu over the past year, so be sure to bring a measuring tape on your next fishing trip. Get out there and enjoy the fantastic fishing season!



Gold Clam Is Here, And There Are New Check Clean Dry Protocols!

Exciting developments are underway in the fight against invasive gold clams, thanks to funding from MPI and DOC. New research has led to updated “Check Clean Dry” procedures specifically designed for clam-infested waters, incorporating effective treatments for eliminating small clams. There are now three separate Check Clean Dry procedures: [North Island](#), [South Island](#) and the [Waikato River gold clam area from Whakamaru Dam to the river mouth](#).



Red area shows gold clam habitat in the Waikato River Oct 2024.

Anglers should be cautious: some of the Waikato River gold clam area recommendations list **chemical treatments, including bleach, can severely damage your waders.** Fortunately, other tested methods are more practical. Fish and Game is collaborating with the Manic Tackle Project and I Love Fly Fishing to refine these new procedures. Staff aim to establish safe, practical and effective decontamination methods by year-end. In the meantime, freezing waders solid or allowing them to dry for at least two days are excellent interim solutions for killing clams.

Anglers in the Waikato Region need to remain vigilant, as gold clams have now spread throughout the Waikato River. Any boats or gear used in this area must be properly treated before moving to other waterways. With the likelihood of further spread, anglers are urged to keep an eye out for these clams and report any suspected sightings.



By following these guidelines, we can work together to protect our waterways from invasive species. Stay informed, stay prepared, and let's keep our fishing environments healthy!

Protecting Rotorua Lakes and Lake Taupō from Invasive Clams

We urge our fishing community to be vigilant against the threat posed by invasive clam species now found in the Waikato. Recent findings suggest that these clams were introduced at wakeboarding sites, where ballast tanks in wake boats can carry a host of invasive species, including gold clams.

All original locations of the gold clam infestation were popular wakeboarding sites, while nearby areas frequented by anglers remained untouched during the initial outbreak. This suggests that wake boats are a primary vector for the spread of these species.

Despite legal restrictions on moving boats with ballast tanks between waterways, enforcement remains lax. Currently, there are only a handful of signs at boat ramps, with

just one sentence addressing the prohibition of using boats that have been in the Waikato River in other water bodies.

To combat this issue, we need your help. Please keep an eye out for wake boat activity and inform boat owners about the risks of spreading the gold clam.



Biosecurity sign with the wake boat rules next to the red arrow.

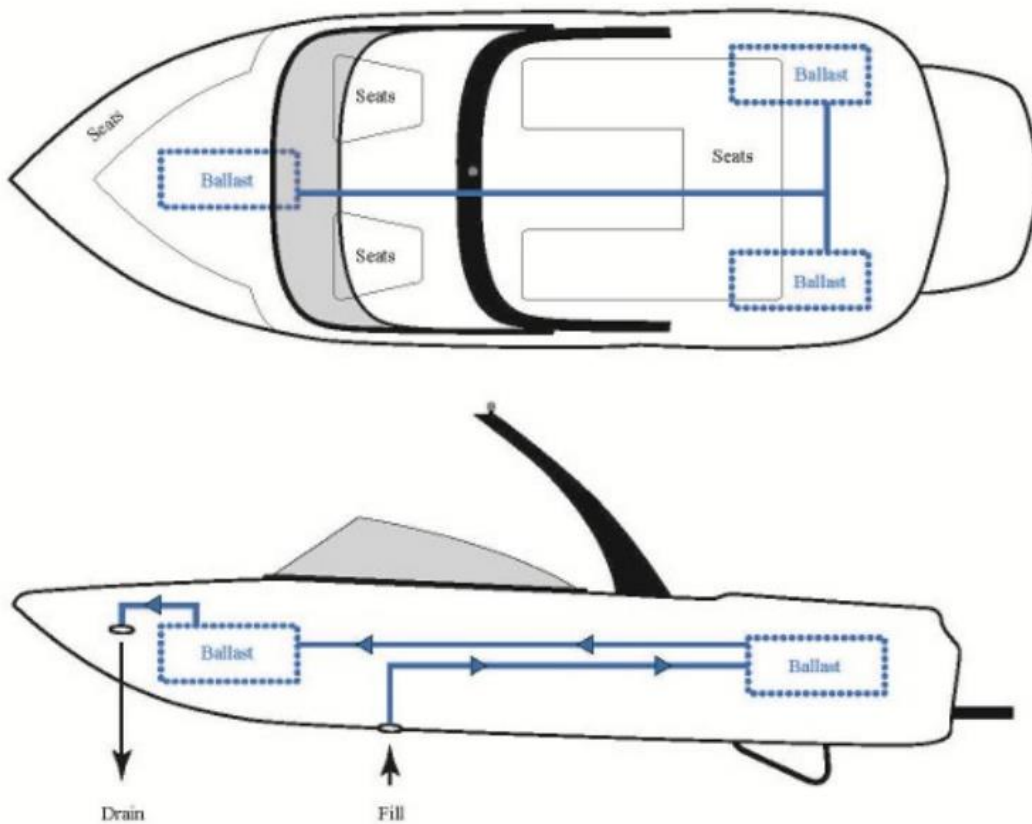


Diagram of internal tanks of a wake boat that can carry up to 40 Litres of water even when empty.

Fishing Access Fund Hits \$24,000 In Donations! Please Donate To Make Sure Future Generations Can Enjoy Fishing In Our Region.

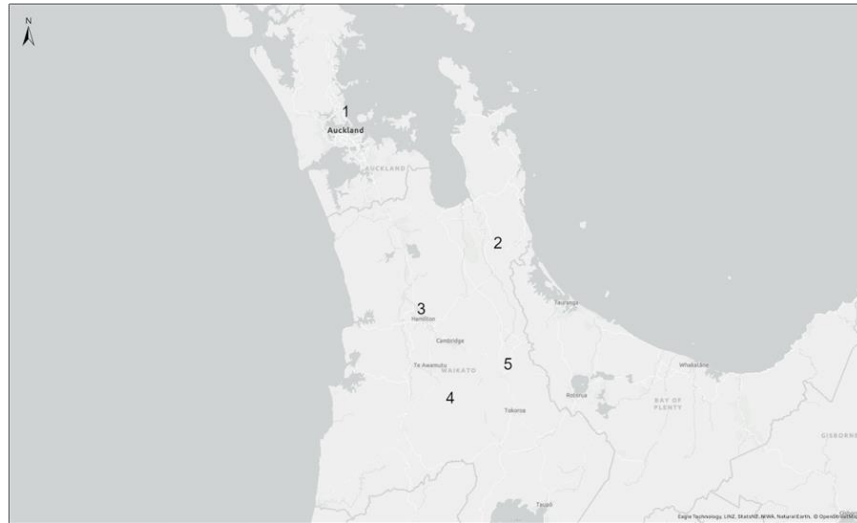
The Auckland/Waikato Fish & Game Access Fund has already surpassed the \$24,000 mark thanks to a very generous donation from the WWW Foundation. The fund will be used to purchase key access properties and access easements will be added to the title. The property can then be resold to fund future access property purchases. **Auckland/Waikato Fish & Game are currently adding enduring public access to the Stone Jug Road property title with funding from Herenga ā Nuku Aotearoa (The Outdoor Access Commission).** Once the access is in place staff will pursue other properties to improve fishing access in the Region. **If you would like to leave a legacy for future generations of anglers in New Zealand please donate** to our access fund by making a deposit to Auckland/Waikato Fish & Game Westpac account 031555 0009767 00 with “access fund”

in the details. If you would like to **donate access property** or help safeguard fishing for future generations, send an email to adaniel@fishandgame.org.nz.



A very happy Marvin Daniel fishing on Auckland/Waikato Fish & Game access property.

5 Spots To Get Started Trout Fishing In The Auckland/Waikato Region



The Waikato region is a fantastic place for beginner trout anglers, offering a diverse range of fishing locations. With stocked lakes around Auckland, charming streams in Coromandel, and the expansive Waikato River, there’s something for everyone. Here’s a guide to five accessible spots, organized from north to south, and from early to late season.

To see the public land and access points we recommend our [access website](#) or [Outdoor Access Maps](#). We have inserted links for most rivers so you can view added information.

- 1. Auckland lakes** (Best: May– November; Methods: fly/spin/bait). Quarry Lake (at Lake Pupuke), Parkinsons Lake and Lake Whatihua fish well in the cooler months (May-November). Spin and fly gear work well in our stock lakes but it is also easy to catch fish with a [float and bait](#). These lakes are periodically stocked with rainbows to provide some trout fishing close to Auckland. Quarry Lake is stocked for the Easter, winter and spring school holidays. Please watch our Facebook page to find release dates.
- 2. Coromandel streams** (Best: April – December; Methods: fly/spin) The [Ohinemuri and other Coromandel](#) peninsula streams are known for their early-season action, with plenty of trout eager to bite. The Ohinemuri is a popular fishery with easy access along Highway 2 or the Hauraki Rail Trail. Anywhere between the railway tunnel (just past Paeroa) and Waihi is likely to give good results. Other streams such as the [Kauaeranga](#) and [Waitawheta](#) are also great options. The picturesque scenery adds to the experience, making it a perfect spot for a day out
- 3. Waikato River** (Best: May – Nov.; Methods: Spin/soft bait) While the [lower Waikato](#) may not be the pristine water that anglers dream about, it does have a good population of catchable brown trout. Local experts target the edges, under overhanging trees and eddies with short casts using spinning rods and soft baits or spinners. The base of Karapiro Dam, Hamilton Narrows Boat Ramp, Hammond Park, The Point (Ngāruawāhia), Taupiri Boat Ramp, Huntly Walking Bridge, Waahi Stream outlet (Harris St Huntley) and Mercer Boat Ramp all hold trout until the Waikato River reaches 19°C and then the fish move up the Waipa tributaries.
- 4. Waipa tributaries** (Best: October – June. Methods: Fly) Once summer sets in, the higher elevation Waipa tributaries start to fish well. These spots are less affected by the summer heat, offering cooler waters for trout. The stunning natural surroundings make for an enjoyable fishing experience. The [upper Mangatutu](#) is a small stream with a lot of pressure. Public access above the Wharepunga Road bridge is easy and, although you will see plenty of fish, the bigger ones tend to be wary. However, it is a lovely stream with a good mix of brown and rainbow trout. Please avoid fishing in low summer flows as the fish are temperature stressed. If you enjoy fishing the Mangatutu try Pirongia Mountain streams like the [Kaniwhaniwha \(Limeworks Loop Road & Fillery Road\)](#), [Ngakoahia](#) or further south to the [Moakurua \(Honikiwi Road\)](#) and [Awakino \(Gibbon Road\)](#). Not all of the streams listed have public access

so please check the [Outdoor Access Map](#) and knock on some doors to ask for permission where necessary.

- 5. Waikato Spring Creeks** (Best: all year; Methods Fly/spin/bait)
Regardless of the season, Waikato's spring creeks are consistently good fishing spots. These waters remain cool and clear, handling rain without losing their fishing quality. They're perfect for those looking to cast their lines throughout the summer months.

As with all our spring creeks, the upper [Waihou](#) has high populations of mostly small rainbows with the occasional bigger fish. There are no gear restrictions on the Waihou but the section on Whites Road is perfect for dry fly and euro nymphing. While Te Waihou walkway is closed to walkers, anglers are legally able to walk around the fence and fish upstream. The walkway should reopen in some time in November. Another option is upstream of the SH5 road bridge on the true left (Western side). Construction of roadside barriers means that you will need to park a little further away than previously, but fishing is generally good. Waders are practically essential on the spring creeks due to the cold-water temperatures and care needs to be taken crossing this fast-flowing stream. If you like the upper Waihou the [Waimakariri](#) is very similar and just down the road (HW5). The [Pokaiwhenua](#) and [Little Waipa](#) are similar spring creeks that are also worth a look.



Waikato Spring Creek



Mangatutu River brown trout.

5 Perch Spots In The Auckland/Waikato Region

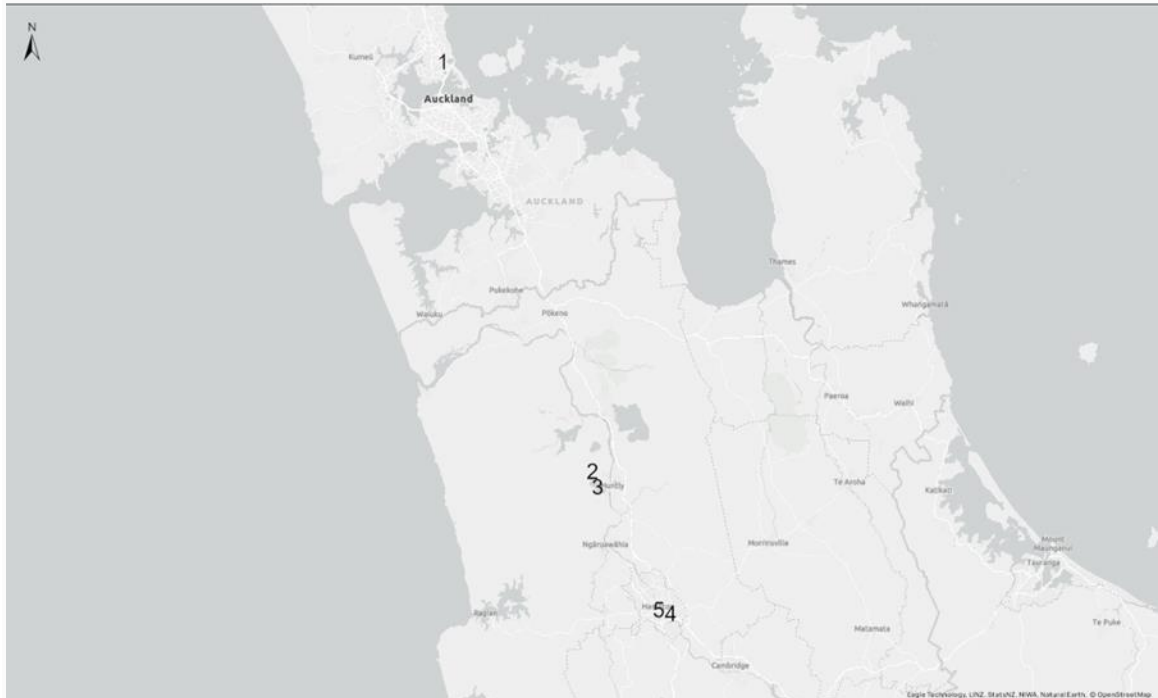
Perch are an often-overlooked gem in the freshwater fishing world delicious, easy to catch, and perfect for a family outing. If you're looking for a way to introduce kids to fishing or want a fun day on the water without a long drive, targeting perch is a fantastic option. Perch are fun to catch on spinners, soft baits and streamer flies. If fly fishing, try a floating or intermediate line with a short leader and a slow retrieve. If soft baiting or spinning, the same rules apply. Perch won't make your reel scream, but you won't be bored either. We recommend first time perch anglers use small soft baits like the [Savage Gear Perch Canal Pro Pack](#). There are some great YouTube videos on [how to catch perch](#) and [what to do with them](#) so we will focus on where to go in the Auckland/Waikato region.



Turtle Lake



Perch soft bait and baits



1. **Quarry Lake** (Best: Summer. Methods: Fly/spin/bait) There is great access to perch fishing at Lake Pupuke and Quarry Lake from Northcote Road. This area is a good spot for a walk or picnic but please respect other users around the RC boat area and polo park.
2. **Lake Puketirini** (Best: Summer. Methods: Fly/spin/bait) This clear lake just outside Huntly is much prettier than you would expect. It contains no trout but has a high population of perch. The lake also contains Koi carp. These are a pest species, and a tough challenge sight fished with long leaders and subtle presentations. Any Koi landed must be killed.
3. **Lake Waahi Boat Ramp** (Best: Summer. Methods: Fly/spin/bait) The Lake Waahi Boat Ramp is next to the Lake Puketirini stream outlet where the clear water enters the muddy Lake Waahi. The perch love this area, and it is easy to fish both lakes.
4. **Turtle Lake** (Best: Summer. Methods: Fly/spin/bait) Turtle Lake has lots of small perch, but it is easy access and great for kids fishing with a nice area to play and access to the Waikato River.
5. **Hamilton Lake** (Best: Summer. Methods: Fly/spin/bait) Hamilton Lake is perfect for kids fishing with great access, playgrounds and even a café. Although you can fish from any of the carparks, targeting areas with some structure is recommended.

RMA Update

Oji Fiber Solutions: A Setback For Waikato River Cleanup Efforts

Oji Fiber Solutions was poised to make a significant impact on the health of the Waikato River by committing to a \$200 million upgrade of its wastewater plant at the Kinleith mill near Tokoroa. As the largest polluter of the Waikato, the Kinleith Mill contributes to the degradation of river's colour from the iconic blue of Lake Taupō to the brown waters seen in Hamilton. The proposed improvements were estimated to equate to retiring over 2,500 hectares of intensive dairy land.

Unfortunately, the company recently announced that escalating costs and challenging economic conditions have rendered these upgrades unaffordable. The Kinleith Mill generates some of its own power but relies on purchasing up to a third of the output from the Karapiro Dam. Rising power costs have further jeopardized the mill's profitability, leading to uncertainty about its future. As a result, the company will need to reapply for

resource consents, negating the ambitious pollution reductions previously promised for 2026. This is an unfortunate situation, as the proposed water quality improvements could have greatly benefited trout populations in Lake Arapuni and downstream. Instead, staff will now face lengthy negotiations for new consents.

Other RMA Work Staff Are Working On To Protect Our Waterways

- **Waikato Plan Change 1** – This is a pivotal plan aimed at realizing Te Ture Whaimana Te Awa o Waikato, the Vision and Strategy, outlined in the Waikato-Tainui Raupatu Claims Settlement Act 2010. For nearly a decade, Fish & Game has invested significant resources into developing a plan that will improve the Waikato River, with the goal of making it swimmable and safe for food collection throughout its length. Collaborating with NGOs, industry groups, and local councils, Fish & Game is working tirelessly to ensure the new plan will deliver the required water quality improvements for the Waikato and Waipa catchments. Key aspects of the plan are currently before the Environment Court.
- **Waitomo District Plan** – Staff were successful in including Benefit Lot provisions (an entitlement to subdivide which is awarded by the Council) where legal access is created specifically for enabling fishing in the upper Awakino and Waipa River catchments. Upcoming topics will focus on freshwater management on council-owned land, seeking to implement rules for setbacks, minimize agricultural runoff, and restore non-leased land.
- **Te Heke Ngahuru ki Te Awa Tupua Consultation** – Dr Adam Daniel presented on behalf of Auckland/Waikato Region for the Te Heke Ngahuru ki Te Awa Tupua (Te Heke Ngahuru). The long-term strategy sets the direction for activities in the Whanganui River catchment. He emphasized the need for clear outcomes and timelines to improve overall water quality, advising against the costly collaborative approach seen in Plan Change 1. Adam was impressed with the staff working on the project and believes Fish & Game are lucky to be working with partners that are passionate about improving water quality in the Whanganui River.
- **Consultation on synthetic pyrethroid** – Following two separate mass die-offs of crayfish (kōura) in the Oraka Stream, investigations indicated that pyrethroid-based insecticides were likely the cause. In response to these alarming events, Fish & Game submitted a formal request to the Environmental Protection Authority (EPA) for restrictions on the use of these chemicals to prevent further contamination of waterways. The die-offs highlight the urgent need for stringent regulations to safeguard

aquatic ecosystems and protect native species. By advocating for these restrictions, Fish & Game aims to ensure healthier waterways and a sustainable environment for both wildlife and recreational users.

- **Fast-tracking Bill** – The Fast-track Approvals Bill is of concern to Fish and Game as it allows decisions to override the environmental and conservation purposes of the Conservation Act, Reserves Act, and Wildlife Act, as well as the RMA. Further, the expert panel who review the applications have no decision-making power and are not required to seek comment from the public or groups like Fish and Game. Projects like the Ruataniwha Water Storage Scheme, now the called Tukituki Water Security Project, were previously litigated and rejected can now go ahead with little or no recourse from the public.

AUCKLAND/WAIKATO

Sports Fishing Regulations 2024/2025

Fish & Game NEW ZEALAND

AUCKLAND/WAIKATO REGION

Auckland

Hamilton

Auckland/Waikato Office: 156 Brymer Rd, RD9, Hamilton 3289
Phone: (07) 849 1666
Email: aucklandwaikato@fishandgame.org.nz

SCAN FOR ALL REGIONS REGULATIONS

Fishing Regulation Consultation

New Zealand’s sports fish are managed by the anglers for current and future generations of anglers. Every three years Auckland/Waikato Fish & Game Council review their fishing regulations and invite anglers to make suggestions on rule changes. Staff will consider the suggested changes and produce a report to council on the potential impacts of the suggested changes and then give a recommendation to council on adopting amended regulations.

The Auckland/Waikato Fish & Game Council currently has over 100 regulations, which can be confusing even for seasoned anglers. There’s a national push to simplify fishing rules, and we want your feedback on replacing our complex system with a single limit and no tackle restrictions. This proposal suggests allowing all legal fishing methods (fly, spin, and bait) year-round, with a two-fish limit

across all waterways, except for significant spawning streams like the Mangatutu, which would be closed in winter. Several regions including Southland have already made the change allowing all legal methods with a two fish limit on all waterbodies. Southland has excluded one trophy fishery from the simplified blanket rules. To date, the Southland Fish & Game staff have not seen any adverse consequences of this approach

Because the simplification of rules is such a big change, we thought it would be useful to review why we impose rules including **seasonal restrictions, gear type, limits and size restrictions.**

Season

Closed seasons are put in place primarily to protect spawning fish in sensitive fisheries. Some of our streams punch far above their weight in terms of the overall fish population. Because the Waikato River is too hot in the summer the fish that inhabit the river during cooler months are primarily from the upper Mangatutu, Puniu and Waipa making these streams critical spawning areas. However, spawning normally occurs in the upper reaches of the catchment and is unlikely to be impacted significantly even if the season was open. The Mangatutu is one exception where a spawning season closure is likely appropriate due to high angler use and accessible spawning areas.

Gear type

Tackle restrictions are used to lower harvest and angler use. Angler use is reduced when waters are designated fly fishing only, primarily excluding young and inexperienced anglers. Angler use is declining on most Auckland/Waikato streams so it would be difficult to justify gear restrictions to control angler use.

Although spin and bait anglers are more likely to harvest fish setting a limit is a more direct way of restricting harvest. Recent catch rate data from Lake Arapuni has shown that bait fishing has a lower catch rate than spin or fly fishing. Soft baits have also dominated the leader board of the Lower Waikato Trout Fishing Competition out pacing bait ten to one, so it is difficult to justify the exclusion of bait.

Council has previously considered a proposal to restrict treble hooks, but several studies have shown that treble hooks are no less deadly than other methods. It is likely that catch and release angling during hot weather is the biggest indirect killer of Auckland/Waikato trout. Multiple studies have documented **high mortality of released trout with up to 30% of released fish dying.** Trout do not do well above 19°C and it is likely that skilled fly anglers fishing in hot summer conditions are the greatest threat to our trout population and

that is why Auckland/Waikato Fish and Game Council were the first in the country to ban fishing tournaments when water temperature exceed 19°C. There is no proposal to restrict fishing based on water temperature as the Auckland/Waikato Fish & Game Council has chosen to adopt an educational approach and ask all anglers to avoid fishing in areas where water temperature exceeds 19°C.

Limits

Restricting the number of fish an angler can kill is an extremely effective way of reducing harvest but as mentioned above post release mortality can also be high. If season length is extended and all gear methods are allowed on all rivers a relatively low limit would be a good tool for restricting harvest to a level that is sustainable in all rivers. Currently limits in the region are between 0 and “no limit”. With no limits in some spring creeks with lots of small fish and a limit of zero in the upper Whakapapa River to maintain a trophy fishery. However, requiring catch and release (0 limit) is ethically questionable and has been discouraged at a national level.

It is rare for anglers to kill fish in our streams and extremely rare to see an angler with a limit of trout. During the Whakapapa Angler Use Monitoring Study over 400 anglers were observed and only 1% had dead fish. The current 0 limit on the upper Whakapapa was introduced to create a trophy fishery in the Whakapapa River. Drift diving surveys on the upper Whakapapa have shown a similar number of large fish outside of the restricted area where fishing pressure is high and there is a two fish limit likely due to a culture of catch and release fishing.

Size Restrictions

Minimum size limit of 300 mm on most streams is used primarily to allow fish to survive to maturity and maximum size limits are used to protect large fish to create trophy fisheries or to protect large fish for spawning. In terms of protecting the overall population large fish are far more valuable and less plentiful than small fish so the current “no limit” on trout under 300mm on the Waihou River and Waimakariri stream, allows for more opportunity but staff have never seen anglers with multiple small fish.

We Want Your Feedback There are two ways to give us feedback, you can send an email to adaniel@fishandgame.org.nz or [take our online pole](#). Submissions are due by **November 31, 2024**, and are not limited to the changes suggested above. As a licence holder you can suggest any rule changes you would like the council to consider for the Auckland/Waikato Region. The suggested changes will be collated by staff who will make recommendations to the council for consideration in early 2025.

New Council

The Auckland/Waikato Fish & Game Council is made up of 12 volunteers elected by licence holders and a new council has just been elected. Fish and Game councils manage sports fish and game resources on behalf of anglers and game bird hunters. The Auckland/Waikato Fish & Game Council is one of 12 Fish and Game councils with the task of setting outcomes they would like staff to achieve for licence holders. For example, our current council would like staff to focus on improving angler access and increasing the duck population. The New Zealand Fish and Game Council is made up of a representative from each of the 12 regions and governs national issues. Our returning councillors include:

1. Juby, Nigel Central Waikato
2. Annan, Grant Southern Waikato
3. Williamson, Euan Hauraki Coromandel
4. Dickey, Geoff Northern Waikato
5. Smith, Shane Hauraki Coromandel
6. Cocks, David Auckland South
7. Clark, Tony Northern Waikato
8. Barker, Matt Auckland North

Our new councillors include:

9. Brown, Aaron Central Waikato
10. Sapich, Anton Auckland North
11. Dell, Paul Northern Waikato
12. Kent, Oliver Auckland South

Staff would like to acknowledge the significant contributions of retiring councillors Colin Sherrard and Peter Shaw. Both Sherrard and Saw have made major contributions to hunting and fishing in the Auckland/Waikato Region. Staff are not ready to let them off the hook yet though and hope to get many more years of duck banding out of them before they can fully retire. If you missed out on voting, please remember to opt in when you buy your licence as our voter turnout was relatively low at 20%.

Access

Te Waihou Walkway (Blue Spring) To Open Before Summer

South Waikato District council have been working hard to reopen the Blue Spring Walkway. The river is not closed to fishing, but the walkway has been officially closed to walk on for the last year. The track should reopen by December making the river accessible from the upper car park. Please check the [Auckland/Waikato Fish and Game Facebook page for updates](#).

Arapuni Boat Ramp Below Waipapa Dam Closed

Raukawa Charitable Trust has blocked the boat ramp below Waipapa Dam and the track to the Mangawhio Stream. Fish & Game were consulted on the potential closure intended to allow the trust to build a waka ama launching and storage site. Fish & Game staff fully supported the concept of a cultural site but were not comfortable with DOC allowing the public access to be closed. The boat ramp was installed as mitigation for the power scheme and staff believe that if access is lost it needs to be replaced in an alternative location. Fish & Game were also told DOC had agreed to closing the site and an access agreement, included multiple keys for anglers, would be in place before the gate was locked. Unfortunately, the gate has been locked without an agreement with DOC or other parties involved. Staff are Working with DOC who have been very responsive and concerned about the loss of public access.



Whakapapa Intake Road

The Whakapapa intake road was closed to the public immediately after the Ngāti Tūwharetoa Claims Settlement Act in December 2018. The treaty settlement included an easement administered by DOC that allows the public to drive to the Whakapap River. DOC were contacted to initiate mediation with the landowner as the crown representative on the easement but to date have refused to do so. Staff member Dr Adam Daniel met with the new landowner in 2020 and was unable to negotiate the reopening of road. Fish & Game have contacted DOC staff on multiple occasions and have not had a response in recent months despite all parties agreeing there is legal public access provided by the easement. Staff are determined to restore access and disappointed with the lack of urgency shown by DOC staff and will keep working toward a resolution.



Drum Bridge Road Waipapa River

The drum Bridge Road access to the lower Waipapa River is in bad shape and requires a decent 4wd. The track will leave scratches on your vehicle due to brush and is not recommended after heavy rain unless you are an experienced 4wd enthusiast. The alternative walking access is signposted (4.2 km further west) next to a gate with instructions for checking in with the farm manager. The good news is that is that if you can get to the river fishing is amazing during the summer.



Upper Mangatutu Parking

Due to some poor behaviour last year the district council has blocked the road to the upper Mangatutu about 100m off Wharepuhunga Road. The new car park prevents people from dumping rubbish at the swimming hole and hopefully the loss of drive-up access will discourage the poor behaviour that prompted the closure. There are boulders across the old track so be careful if you pull in when it is dark.



DRY AND DROPPER TUITION CLINIC

The Dry and Dropper Clinic with Aaron West was held early this month on the Ohinemuri and was a great success with all the guys catching fish and learning an enormous amount from a very skilled teacher. It was so successful that we are looking at running another one so please let us know if you are interested.



The Boys, ready to go!



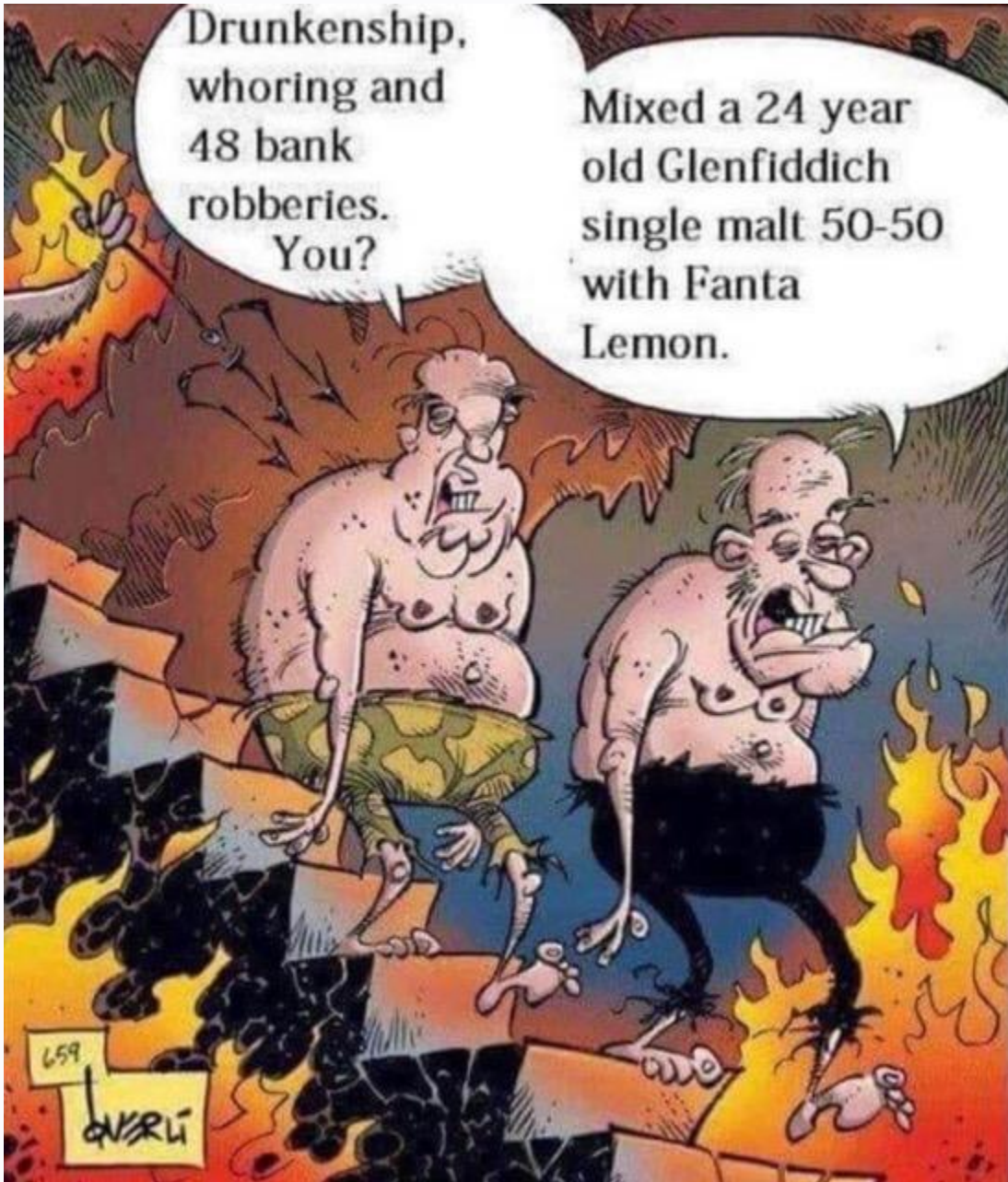
Jaco with the fruits of his success.



Above: Mitch hooked up. Below: Jaco getting some hands on tuition with Aaron. All photos courtesy of Andrew Todd.



FISHING FUNNIES



(Opinions expressed in this Newsletter are those of the individual contributors and not necessarily those of North Shore Flyfishers Incorporated)

MEMBERS FEEDBACK

We, your committee, are always trying to give you what you want.

But are we??

In order for us to do our job properly we need to have your feedback, positive or negative. For example, have you been on a club fishing trip? Did you enjoy yourself? What would you change, if anything? Club nights – what would you like to see more of? Less of? In short, talk to us.

The contact details of all your committee members are listed at the end of every newsletter. So if you have something on your mind let us know.

Thank you - Your committee

NSFF CLUB MERCHANDISE

Cap – \$15.00 Inclusive of GST

Green or Beige, one size fits all, with embroidered badge.

Embroidered Cloth Badge - \$7.50 Inclusive of GST

Brushed Brass Metal Pin Badge - \$12.50 Inclusive of GST

If anyone is interested in purchasing these products please place an order at Club Nights.

Meetings held the 3rd Wednesday of each month at 7.30pm:
Birkenhead RSA, Recreation Drive, Birkenhead, North Shore City

NORTH SHORE FLYFISHERS EXECUTIVE

Club Patron – Dave McLellan

President - Dave Symes 486-6257 Takapuna

president@nsff.org.nz

Secretary - Mike Martindale 020 445 4337 Takapuna

secretary@nsff.org.nz

Treasurer - Barrie Barnes 021 925 006 Glenfield

treasurer@nsff.org.nz

Magazine - Duncan Frew 021 648 956 Torbay

iconpromote@gmail.com

Committee – Allen French 021 1018 838 Birkdale

a_bfrench@hotmail.com

Members Maurice Parlane 021 650 692 Northcote

maurice.p@newwayz.co.nz

Neil Smit 021 274 5625 West Harbour

neil.smit@sew-eurodrive.co.nz

North Shore Flyfishers Incorporated