



# *THE FLYFISHER NEWSLETTER*

---

April 2026

---

## IN THIS ISSUE

- Page 1 - Presidents Report
- Page 3 - Club Facebook Page
- Page 3 - Fishing Report
- Page 6 - What's Happening – Club Nights / Events
- Page 8 - Club Trips
- Page 12- Tips and Tricks
- Page 13 - Recipe Of The Month
- Page 14 - Club Day Trips, Fly-tying, And Casting Practice
- Page 14 - Reel Life March 2026 - Northland
- Page 16 - Reel Life March 2026 - Auckland Waikato
- Page 18 - Reel Life March 2026 – Eastern
- Page 22 - Wading Safety
- Page 27 - Salmon Everywhere
- Page 31 - The Flymph Concept
- Page 34 - **General** Club Information Plus Committee Members Contact Details

## PRESIDENT'S REPORT FOR YEAR ENDING 31<sup>ST</sup> MARCH 2026

Greetings all. Yet another 12 months have slipped by with our club now entering its 22<sup>nd</sup> year. As is so often said, “time flies when you’re having fun”!

In compiling this report, I referred back to my 2025 report and for those of you who don't have easy access to that previous document, I would like to quote the second paragraph

verbatim: “ Largely as a result of political decisions emanating from Washington D.C., the world is currently experiencing unprecedented levels of uncertainty and worry so there is probably no better time to enjoy the simple, contemplative pastime of casting a fly to an unsuspecting fish and waiting for the line to “tighten”!”

While casting a fly still remains the core purpose of our club, the “downstream” impact of recent political decisions has meant that for many and possibly most, club members, the rapidly rising cost of motor fuel and other associated expenses, will seriously undermine the chances to go fishing, especially to more distant locations. Home-based fly tying may well be the closest piscatorial activity we get to enjoy in the fervent hope that “normal transmission” will be resumed in the not too distant future. In the meantime, vehicle sharing will no doubt become much more popular, at least while there is still fuel to buy.

For various reasons, our club meetings over the past year has involved a smaller number of guest speakers but when available, the quality of presentations has been excellent. However, at our most recent meeting in March, the evening began with an introductory slideshow from Vice President, Duncan Frew, following which, all of the club members attending were encouraged to participate in the sharing of their own experiences including tips, tricks, “do’s and don’ts” interspersed with a few yarns. By evenings end, the “feedback” was so positive, that I think such evenings should be included in our program from time to time.

I am pleased to report that North Shore Fly Fishers Club remains in a very healthy state with new members coming along regularly, club trips enjoying great levels of participation and senior/experienced members passing on their extensive knowledge to the “newbies”. Behind the scenes, our committee continues to do a fantastic job, and I thank them all very sincerely for their contributions. At the forthcoming Annual General Meeting on Wednesday, April 15<sup>th</sup>, most of our existing committee members are prepared to offer themselves for re-election. Only one member will be retiring. Neil Smit is in the process of relocating to Christchurch and I will take this opportunity to thank Neil and wish him and his family all the best.

I look forward to seeing as many of you as possible at the AGM and hopefully, you will have enough fuel to get there and home again.

Dave Symes  
President

## SCAMS

With the plethora of ever more sophisticated Scams out there these days we felt it a good time to remind everyone that the **Club Will Never Send You An Invoice** for Subs or Club Trips. If you receive an invoice saying it is from the Club then it is a Scam. Do not open it, do not pay it.

## NEW CLUB FACEBOOK PAGE

The Club now has a **NEW Facebook Page**. The old one has been underutilized for a while and this new one is open to anybody, Club Member or not. The only restriction is that posts will be approved before they are posted so as to protect from the random idiots that can lurk on the net. The link is below, and also on the Clubs Website

<https://www.facebook.com/share/1ArtnBvMAW/>

Please do join the page and post away, it really is a case of every post will encourage others to post and before we know it the Club will have a thriving online presence.

## FISHING REPORT

### Auckland / Waikato



As some of you will know, Matt has been exploring all over the place and discovering new water and ways to do things. On a recent visit to the Coromandel he cracked it with two beautiful Rainbows. He was a very happy man!

*Matts first NZ Trout. Photo courtesy of Matt Bourne.*

Further south the Waimakiriri Stream, not far from Tirau, fished exceptionally well last weekend for the Competition guys. One very interesting tip was from Competition winner Ollie Bassett, who found that as the fish 'got over' nymphs he started to catch at least half his fish on the dry fly.

## **Rotorua**

A visit last week to the Ngongotaha with Kerry and Ryan produced some very solid fishing. We didn't see any of the Big Browns that this river is famous for but we did manage to land a number of Rainbows. The fish were in varying condition, from very coloured up to quite fresh and fat. Flies that worked best were rubber legged pheasant tails and glo bugs.



*Garry and Faith cleaned up with their river mouth fishing on the recent Club Trip to Rotorua. Photo courtesy of Faith Moon.*

## **Taupo**

River Mouths – Fishing well with some Big Browns about.

Tongariro – All over the place. Some are doing very well and others struggling. Going to longer and lighter leaders is definitely helping.

Tauranga Taupo – Very low.

Hatepe – no reports.

Lake Taupo – Jiggers continue to dominate and are getting good results but not as good as last month.

Lake Otamangakau – this picture from Fikrit should say it all...Big and Fat!

*Photo courtesy of Fikrit Chinassi.*



### **Saltwater**

The Kahawai continue to chase the Anchovy schools into the shallows all up and down the Bays beaches and often within casting distance from the shore.

### **Fishy Tales**

- If you do have a report, success story, or anecdote to share then just send it to [iconpromote@gmail.com](mailto:iconpromote@gmail.com) . Happy Fishing and Tight Lines – Freddy Da Fish.

## LAST CLUB NIGHT

Last month we had a Triple T night, Tips / Techniques / and Tricks. Thank you to everyone.

## NEXT CLUB NIGHT – 15<sup>th</sup> APRIL 7.30 PM

This month we have our AGM followed by a ‘Bring and Buy’ session. If you are looking to sell some gear that you no longer want then bring it along and lay it out on a table. If you are in the market for some new gear then this is the time to maybe score a bargain. Just remember that all transactions are between seller and buyer, and the Club is not involved.

This is sure to be an enjoyable night and we hope to see you all there.

## WHY WE FISH

*"Three-fourths of the Earth's surface is water, and one-fourth is land. It's quite clear that the good Lord intended us to spend triple the amount of time fishing as taking care of the lawn."*

*Chuck Clark*

## CLUB TROPHIES

**Brown Trout Trophy** – This is awarded to The Heaviest Brown Trout caught by a Club Member during the year – 1<sup>st</sup> April to 31<sup>st</sup> March. Current holder is **Fikrit Chinassi**.

**Chain Snore Trophy** – A fun award given immediately after any Club Trip to the person who has done the ‘funniest’ thing over the weekend. If nobody has had anything like this happen it may be awarded to the worst snorer. Current Holder is **Faith Moon!**

**Ian Hunt Memorial Trophy** – Heaviest Trout caught fly-fishing by a Club Member during the Pupuke Challenge Competition. A competition run every year to promote the Lake Pupuke fishery. This was not held this year. Current holder is **Lucas Bathurst**.

**I Love Flyfishing Trophy** – Awarded to the Club Member who has caught the most species of Saltwater fish fly-fishing over the year – 1<sup>st</sup> April to 31<sup>st</sup> March. Current holder is **Russell Nelson**.

**Rodd And Gunn Trophy** – This is the Club Competition which takes place over two days. One day on a Lake and one day on a River. The current holder is **Duncan Frew**.

The Lake part of the competition has its own Trophy, the **I Love Flyfishing Stillwater Trophy**. The current holder is **Duncan Frew**.

The winner of this year's River section is **Johan Kok**.

*Unfortunately, due to the Lake Otamangakau Trip (and the Lake Competition being cancelled) we can not award the I love Flyfishing Stillwater Trophy or the Rodd and Gunn Trophy this year. Also, despite lots of Club Members catching fish Saltwater Flyfishing, nobody entered their catch, so we are unable to award the I love Flyfishing Saltwater Trophy either.*

### **QUOTABLE QUOTES**

*"Fishing, with me, has always been an excuse to drink in the daytime."*

*Jimmy Cannon*

### **NORTH SHORE FLYFISHERS DVD LIBRARY**

*Over the years the Club has purchased some videos and been very fortunate in having a number more donated for Club Members use. There is almost certainly something there that will appeal to you. So if you would like to borrow one just let any Committee Member know (contact details are on the back page of this Newsletter).*

#### **Club Videos**

Flyfishing with Dave McLellan June 2015 (15 DVD's)  
New Zealand FlyTying (with John Giacon) A Tight Lines Ltd Presentation (2 DVD's)  
Tie A Fly with John Morton The Master Fly Tier  
Blue Water Fishing Techniques (ITM Fishing Show) Matt Watson  
New Zealand Trophy Waters (Volume 6) Bruce Masson A Deep Stream Production

New Zealand Trophy Waters (Volume 7) Bruce Masson A Deep Stream Production  
Running Down The Man A Felt Soul Media Production  
Advanced Fly Casting Doug Swisher Essence of Fly Casting  
Chasing Silver (Tarpon fishing in Florida) Howard Films. Com  
How to Succeed on Reservoirs Part 1 Boat Tackle, Tactics and Flies  
How to Succeed on Reservoirs Part 2 Boat Tackle, Tactics and Flies  
How to Succeed on Small Stillwaters Part 2 Stalking Patterns and Techniques  
NZ Fly Fishing Adventures Going Remote Mike Kirkpatrick  
NZ Fly Fishing Adventures Going Remote Volume I Nelson District-Mike Kirkpatrick  
NZ Fly Fishing Adventures Going Remote Volume 2 West Coast-Mike Kirkpatrick  
NZ Fly Fishing Adventures The Distant Browns of Emerald-Mike Kirkpatrick  
The Manic Guide to Fly Casting Rene Vaz  
Fly Fishing in NZ  
Stealth with a Fly-NZ Wilderness waters Dean Bell Fly Fishing  
SoulFish 2 Global fly fishing Adventures with April Vokey and others  
Gulf Harbour Outdoors with Geoff Thomas NZ fly fishing for Trout and Salmon  
Salt Water Fly Fishing Game Fishing  
Bugs of the Underworld Lisa Cutter  
NZ Fly Fishing MP4s Youtube Video's (4 discs)  
Snapper Secrets (vol 2)  
Fly Fishing in NZ (fishing Clips from Mobil Sport on TV3)  
How to Fish Rapala Lures  
Essential Patterns with Oliver Edwards Vol 1  
Fly Fishing For Reservoir Trout (at Pitsford) Bob Church  
Trout Secrets with Geoff Thomas  
Fishing in Fiordland  
Wee Wets and Small Dries

### **CLUB TRIPS 2025 - 2026**

February –Ngongotaha River and Rotorua Lakes –FEB 2027  
March – Lake Otamangakau – MAR 2027  
May – Ngongotaha River and Rotorua Lakes –MAY 21<sup>st</sup> 22<sup>nd</sup> 23<sup>rd</sup> 2026  
July – Tongariro and Tauranga Taupo – JUL 2026  
August – Tongariro – Club River Fishing Competition – AUG 2026  
September – Tauranga Taupo – SEP 2026  
December / January – Tuition weekend (Held if enough ‘novice’ anglers are interested)  
December – Lake Otamangakau – DEC 2026

The NSF committee arrange various Club Trips over the year to different parts of the country. If you would like to be involved, or have an idea for a trip please let one of your committee know.

### **TUKITUKI RIVER JOINT TRIP WITH AUCKLAND CLUB**

The Auckland Flyfishing Anglers Club has booked the Hawes Bay Club Lodge for **Thursday 16th to Sunday 19th of April to fish the Tukituki River** and has invited members from our club to join them. If you wish to go on this trip please contact Allen French, [a bfrench@hotmail.com](mailto:bfrench@hotmail.com) or txt 0211018838 for details ASAP. The Auckland club is wanting to know numbers.

This Lodge is set up very close to the river, and while completely self-contained, the local country pub is very close by with meals and refreshments.



*A fun backcountry Brownie,  
caught in pristine conditions.  
Photo courtesy of Mitch  
Blackburn.*

## NGONGOTAHA / ROTORUA CLUB TRIP

The May Trip will be the weekend of 22<sup>nd</sup> 23<sup>rd</sup> 24<sup>th</sup> May, with some of us heading down on Thursday 21<sup>st</sup>.

Costs will be \$130.00 each, which will cover 2 nights' accommodation in the lodge and a BBQ on Saturday evening. If you want to come down on the Thursday, as many of us do, then simply add \$55 to make it \$185.00.

Also, a variety of private rooms are available as well.

If you are keen just let me know which nights you can make **ASAP** and then pay your money to the Club in any of the normal ways.

- internet banking to the Club's bank account: North Shore Flyfishers Incorporated ASB A/c #: 12-3209-0190179-00 (please include your name and the word Ngonga as a reference);
- Or by Cash on the December or February Club Nights

**The May Trip is already full but if you are keen just let me know and I will put you onto a waiting list if people have to pull out. Duncan – 021 648 956 – [iconpromote@gmail.com](mailto:iconpromote@gmail.com) .**

*Garry and Kerry tucking in to their '2<sup>nd</sup> breakfasts' at the Piglet Pool on the Ngongotaha. Photo courtesy of Faith Moon.*



## JOKE OF THE MONTH

### The Morning after the Office Party.

Jack woke up with a killer hangover after attending his firm's Christmas Party.

He didn't even remember how he got home. It's 8.30. What day is it? Thursday. His wife must have gone to work.

As he struggled into consciousness through the fog of a pounding headache, his stomach plummeted as he wondered what the hell he did last night.

He forced himself to open his eyes, and the first thing he saw was a couple of aspirins next to a glass of water on the side table. And, next to them, a little vase of sweet peas, freshly picked from the garden.

He sat up. The bedroom was clean and tidy, - there was no trail of drunkenly abandoned clothes, fresh air was coming in through the window and all was serene. He stumbled to the bathroom, also pristine, and, squinting gingerly into the mirror, saw that he had a black eye. This was not a good sign, but no memories were returning.

As he concentrated hard on getting the world into focus, he saw a post-it note stuck on the corner of the mirror. It was written in red, with little hearts on it and a kiss from his wife.

'I'll ring your office and tell them you won't be in today. Breakfast is in the oven. Try to eat something and go back to bed for the morning. There's snooker on TV this afternoon. Take it easy today, hope your eye doesn't hurt too much. See you tonight. I love you, darling! Love, Jillian. X '

He stumbled to the kitchen and sure enough, there was hot breakfast, steaming hot coffee and the newspaper. His teenaged son was sitting at the table, eating.

Jack, bracing himself, asked his son what happened the previous night.

' Well, you came home after 3 A.M., drunk and out of your mind. You fell over the coffee table and broke it, and then you puked in the hallway, and got that black eye when you ran into the door. '

Confused, he asked his son, 'So, why is everything in such perfect order, aspirins by the bed, a nice note from Mum and breakfast waiting for me?'

His son replied, 'Oh THAT!... Mum dragged you to the bedroom, and when she tried to take your trousers off, you screamed, 'Leave me alone you slapper, I'm married!!'

Broken Coffee Table \$250  
Hot Breakfast \$5.50  
Two Aspirins 20c  
Saying the right thing, at the right time.....PRICELESS

## **TIPS AND TRICKS**

At an earlier Club Meeting we had a session all about Tips and Tricks that we might choose to use with our fishing. With that in mind we will use this section for any helpful little Tips that anyone may have that can benefit us all. So, if you have a quick Tip that you are happy to share just let me know on [iconpromote@gmail.com](mailto:iconpromote@gmail.com) .

### **1) Keep Your Line Clean**

Scum from the surface, volcanic ash silt in the central north island rivers, and general use can affect both the floating and shooting properties of your fly line. Ever had trouble getting that line hand back up during the double haul, or not been able to make that line mend because part of your floating line was under the water? If you feel your techniques right, then it's a fair bet it's your line. Clean your line regularly in warm, soapy water, before running it through a lubricant or even just a damp cotton tea towel. Clean lines simply perform better!

## **QUOTABLE QUOTES**

*"Most fishermen use the double haul to throw their casting mistakes further."*

*Lefty Kreh*

## RECIPE OF THE MONTH

I was thinking it would be nice to have some Trout recipes in the Newsletter again so I have gone all the way back to recipes we had in the Newsletter over 16 years ago. Hopefully they are helpful and will encourage some ‘adventurous’ cooking.

### **Smoked Trout Pate.**

The following recipe is one “stolen” from **Brendan Mathews** excellent book, **Volcanic Trout**. It’s delicious eaten straight out of the food processor as a Dip, or well chilled as a Pate. Try it on toast for breakfast, what a way to start the day!

Smoke one 3-4pd Trout, how you do this is purely up to your personal taste buds. I like to rub a tablespoon of Raw sugar into each de-boned fillet, grind some pepper (as much or as little as you prefer) over each fillet, then add a half teaspoon of Cajun spice per fillet. Put this into your hot smoker over a bed of Manuka sawdust and leave for 30 minutes. After taking the fish out of the smoker remove the skin and leave it to cool. This is the hardest part of the whole process, it is so hard to not eat the trout at this point that I quite often go out and clean the smoker so as to remove temptation!

Once the fish is cooled break the fillets into a food processor, add in a teaspoon or two of lemon juice, a 250gm tub of Sour cream, a 250 tub of Cream Cheese, Salt and Pepper to taste, and then gently blend until everything is well mixed. A little tip here is if you want a Dip then blend the heck out of it but if you prefer the pate then take a bit more care. Place the finished dish in the fridge and allow to cool.

You can serve it however takes your fancy, as a pre-dinner snack, as a full entrée with a little salad and some toasted pita bread or simply on Toast.

1 x 3-4pd smoked Trout  
250gm Sour Cream  
250gm Cream Cheese  
Salt / Pepper to taste  
2 Teaspoons Lemon Juice (I put in four, but I like the tartness)

Bon Appetite!

If you have a recipe you would like to share please send it in

## **CLUB DAY TRIPS, FLYTYING, AND CASTING PACTICE**

We have set up 4 Whats Ap Groups for Freshwater Day Trips / Salt Water Day Trips / Casting Practice / and Flytying. We have had several Day Trips, Fly Casting sessions and Flytying sessions already.

If you are keen to join these groups just let us know.

Contact Mike [secretary@nsff.org.nz](mailto:secretary@nsff.org.nz) or Duncan [iconpromote@gmail.com](mailto:iconpromote@gmail.com)

## **REEL LIFE MARCH 2026 – NORTHLAND**



*Image above: A lively rainbow caught in the Kerikeri River upstream from Waipapa*

### **Trout Fishing in the Mid North**

The Bay of Islands area boasts some wonderful and exciting Rainbow Trout Fishing opportunities centred near the township of Kerikeri.

A Trout rearing facility located near the Rainbow Falls, upstream from the famous Stone Store in Kerikeri, was operational until the late 1980's. It was used for stocking of Trout in suitable Northland Rivers by the previous Northern Acclimatisation Societies.

Today these rivers have become completely self-sustaining with stocks of wild Rainbow Trout. Most of the rivers and streams are spring fed so keep coolish over the summer allowing for trout survival in what is a subtropical area of New Zealand.

### **Kerikeri River**

The Kerikeri River originates on the eastern edge of the Puketi Forest and runs gradually downstream to where it flows out into the sea in the Kerikeri Inlet.

There is a walking track beside the river from the Stone Store in Kerikeri right up past Waipapa as part of the Te Araroa Trail. Trout are present throughout the catchment, above and below the falls and large rapids.

The surrounding riparian vegetation and indented nature of this river make for some challenging fishing. Trout are often found lurking in the deep shaded pools. The river mainly runs over volcanic bedrock creating some dramatic scenes.

All fishing methods work well. Fly fishing can be difficult so short accurate casting is necessary.

Main access points:

- Rainbow Falls Road, Kerikeri
- SH 10 – Waipapa Bridge
- Landing Road, Kerikeri

Please [select here](#) to view the Northland Fishing Regulations 2025-26

## **REEL LIFE MARCH 2026 - AUCKLAND WAIKATO**



### **Flooding Has Caused Access Issues**

Please be aware that the recent flooding around the Pirongia/Otorohanga area has had some devastating impacts on our waterways and access to them.

One example is the road down to the Waipapa Drum Bridge ([Click here to view on our Access Map](#)), which is in serious disrepair and no longer accessible by 4x4. You can still get to the river, it's just now a 3-5km walk depending on where you park.

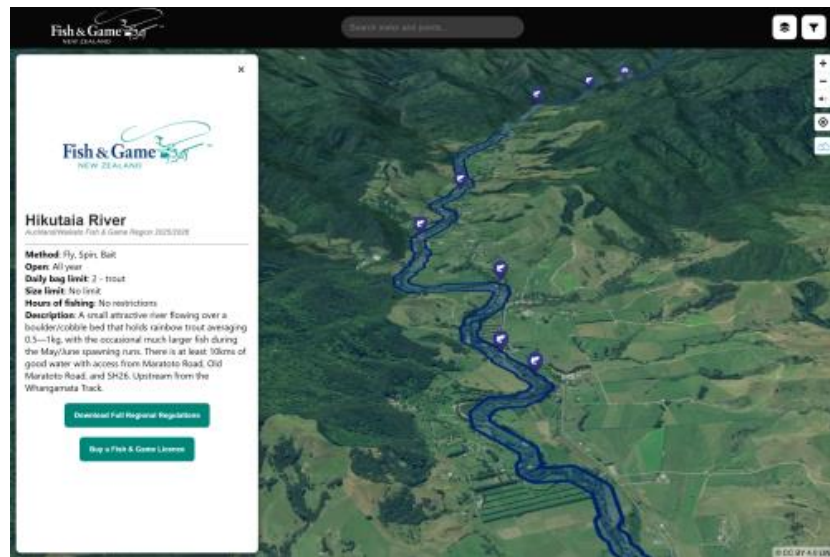
**If you have noticed other instances where access has been damaged from the flooding, please contact our local office [via email](#).**



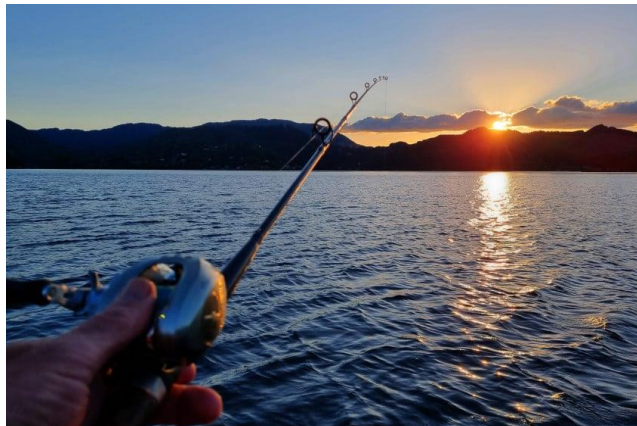
*Some of the significant damage on the previously 4x4 track to the Waipapa River.*

## Access Points Added For Hikutaia River

New access points are available for the Hikutaia River, north of Paeroa, on our [Fishing Access Map](#). The Hikutaia River is a small, attractive river flowing over a boulder/cobble bed that holds rainbow trout averaging 0.5-1kg, with the occasional much larger fish during the May/June spawning runs. While the river is challenging fishing, the upper waters have great scenic value and are a great opportunity to combine fishing with a day walk or a swim in summer.



## REEL LIFE MARCH 2026 – EASTERN



*Image above: Autumn on the Rotorua lakes can be spectacular*

Finally, a nice patch of settled weather has hit the region! Cooler nights and warm settled days have seen anglers making the most of autumn conditions that signal winter is on the way, but there's still lots of opportunity to get out there.

Surface temperatures on the Rotorua lakes have dropped over the last few weeks from in the 20's to between 17 and 19 degrees C. This has had the result that fish are sitting higher in the water column, foraging for smelt right up to the surface, especially early and late in the day.

Check out areas with depths of between 10m and 17m during the day and fish more horizontally – rather than the more vertical styles adopted during summer months when the fish are deeper.

Worth noting also is the lowering oxygen levels at depth on Lake Rotoiti – a normal phenomenon at this time of year. Trout here are being pushed higher in the water column than you might expect them to be, so deep jig drops beyond 25m will be unlikely to produce fruitful results until the lake turns over in a month or two.

The recent *Services Fishing Competition*, run over three days in Rotorua was met with a wonderful patch of weather, but rather hard fishing. The heaviest fish landed was caught by Gary Law from Okataina, a rainbow, tipping the scales at 4.93kg – not quite 11lb!

One of the beauties of autumn angling is that a multitude of methods can be adopted successfully. Harling becomes productive, and on light tackle with a single-action fly reel and a few metres of LED type line it can be a lot of fun also. Shore-based angling, whether it be fly fishing or spin/soft plastic is about to take off and this is the season when fish are at their prime for both size and condition. Shallow boat work, especially dinghies and kayaks around the edge of drop-offs and weed beds are the place to be.

Lake Rotorua's stream mouth fishing has slowed as a result of the cooling conditions. It's been a mixed summer season here again, because trout are dependent on habitat and temperature above most everything else. Brown trout spawning runs will commence in April and run into winter, so keep a close eye on the rain as this is a trigger for spawning activity.



*Mature browns will be on the move from April*

Shoreline spawning at streams and the liberation points will also become active in April, and for the most part run all the way through to August. May and June are the peak of the season for this fishery.

Autumn also triggers a second smelt breeding and juvenile smelt have been noted in the stomachs of fish from Tarawera recently. This is a good sign, and will give the trout a boost as they pack-on weight prior to winter. It's also worth considering some smaller flies on your jigging gear.

### **Carry Your Licence**

Please don't forget to carry your current season licence. Our ranging staff will be out and about across the region checking licences, bags and having a friendly chat in the process. Having your licence on you will make this process much quicker for you – so you can get back to catching fish!



*A routine compliance check made easier because the angler was carrying his licence*

### **Winter Licences**

The winter fishing licence is available from the beginning of April at a much-reduced rate. April marks the beginning of spawning and there's still lots of boat fishing to be had with some lakes and waters staying open until the end of the season on September 30<sup>th</sup>.

Get your chance to enjoy some great fishing at a much reduced licence rate for the remainder of the season.

See [here for licence options](#) and to make a purchase.

### **Don't Forget To CCD!**

The new season is a good time to remind everyone of our need to Check, Clean and Dry gear between waterways. Pest organisms are sadly on the increase and the precious resource we all love is at risk. Please remember to CCD between your fishing trips, follow the instructions of the Regional Councils and MPI.

## **Datawatch Tagged Trout**

Tagged trout can now be entered online. Entries go into the draw to win one of 10 free whole-season fishing licences: <https://www.surveymonkey.com/r/QCH5ZR6>

## **Eastern Region Fishing Diaries – All Lakes And Streams**

Fill in your fishing diaries here to help us manage the Eastern Fish & Game region. Participants go in the draw to win a \$100 voucher from Kilwell: <https://www.surveymonkey.com/r/QRSD7D3>

Disclaimer:

The information presented in these news items is based on the context and regulations in place at the time of publication. Please note that some articles may include reference to laws and regulatory standards that have since changed. For the most current and accurate information please check our [Fishing Licences & Regulations pages](#) or our [Hunting Licences & Regulations pages](#).

## **WADING SAFETY**

*Winter is coming, and with it wading big rivers and cold water. With that in mind it is a good time to redo this article – Ed.*

### **Tips for anglers in the Taupo region**

Taupo Fishery © Department of Conservation Tongariro Taupo Conservancy Taupo Fishery Area June 2005

Further information and practical training can be obtained from Garth Oakden, Tongariro River Rafting.

Phone: (07) 3866 409

### **What to do if you fall into a river**

- Stay calm.
- Roll over onto your back.
- Keep your feet downstream of your body.
- Keep your toes out of the water.
- Use your arms in a manner that holds you in this position.
- Use your arms in a sculling motion and kick your feet to propel yourself towards the edge.
- Focus on an exit point.
- Avoid being swept into obstructions like trees where you risk being pinned underwater.
- Go with the flow until you come to a suitable place to get out.



*Feet should point downstream and arms used in a sculling motion. It is better to hit an obstruction with your feet than your head. Photo: DOC*

### **Wading at stream and river mouths or**

- Look at the area you will be wading into during daylight hours before attempting to wade at night. Push a tall stick into the sand where you would like to wade to during the day, so that when it is dark it will give you guidance.
- Be aware that river and stream mouths can change very quickly and can be soft and boggy when silt has been washed down after heavy rain.
- Check with local anglers to find out if there is a steep drop-off. Or prod the sand with a stick during the day to find the drop-off. Note that drop-offs at river mouths can be very soft and if you stand right on the edge, it will just give way.
- Always wear a wading belt.
- If you go over the drop-off don't try to swim back against the current. Instead, adopt the position shown and scull yourself to the side of the current so you can then reach the beach.

Wherever you go fishing in the Taupo region, keep yourself safe. Do not enter the water if you are at all unsure.



*Strong winds and large waves can change a river or stream mouth quickly. Check where drop-offs are with local anglers, or check the Mouth during the day before wading there at night. Photo: DOC*

Fishing in rivers in the Taupo region can mean wading into deep water at river mouths, or making river or stream crossings. Losing your footing when wading can be potentially hazardous and anglers can get into situations where injury or even death is a very real outcome. All anglers should have a healthy respect for water and before heading out should tell someone where they intend to fish and how long they intend to be.

It is not always necessary to wade in order to fish successfully. If you are unsure about your wading ability, and you lack confidence in the water, don't wade! Look for suitable pools to fish that can be reached from the riverbank or by using thigh waders to go into the water to knee-depth. Linking arms with a fellow angler to cross a river will give you added stability, but you should proceed with caution. However, it's acknowledged that to reach some of the best pools and lies, wading is often required and so this brochure is designed to give simple tips to help anglers to wade safely.

### **Consider what you are wearing**

- Wear a wading belt. These can be bought from sports stores and are reasonably priced. Wearing a wading belt tightly around your midriff or chest helps to prevent water entering the lower half of waders and assists you to float.
- Waders should fit properly – the correct shoe size, not too long or short in the leg and the correct size around the torso.
- You need warm clothing to decrease the chance of exposure / hypothermia if completely wet. Fast drying

polypropylene, polar fleece or merino wool thermals are recommended under waders during the winter.

- Wearing a jacket over waders also limits water entry.
- Take a wading stick. This could be as simple as a piece of wood found alongside the river, or a metal pole with a grip handle similar to a ski pole. Wading sticks provide stability when held upstream during river crossings.
- Wear Polaroid glasses as they cut the glare and allow you to see obstacles below the water.
- Purpose-built fishing vests may have a ripcord which when pulled in an emergency, inflate the jacket to assist buoyancy.



*We strongly recommend the use of a wading belt. They ensure buoyancy and keep you afloat. Photo: DOC*

### **Where are you going to fish?**

- Familiarise yourself with the surrounding area.
- What is the speed and depth of the water in the area?
- Can you safely wade there?
- What is the safest entry point?
- Can you cross back if necessary?
- Look at what is below the surface where you choose to enter. Identify downstream hazards such as trees, rocks, rapids, waterfalls. If you fall in and float downstream will you end up in a gentle pool or a rocky rapid?
- Where is the nearest exit point if you get into trouble?
- When you exit, what are you then going to do? What is your rescue / emergency plan?



*Large rapids and white water can be negotiated if a wading belt is worn. Photo: DOC*

### **What to look for**

- Sand on the bottom indicates areas of low water velocity and provides good footing.
- Large cobbles can provide good footing if scoured clean but will be treacherous if covered in algae.
- If the water is too deep you are likely to begin to float and lose your footing.
- Avoid crossing where you cannot see the bottom.

### **When crossing**

- It is best to cross diagonally downstream in shallow riffles.
- Keep your body side-on to the current to brace yourself and reduce water pressure.



*Check for hazards downstream (e.g. rapids, rocks, trees). If you are at all unsure, do not enter the water. Often good fishing pools can be reached from the edge in thigh waders, with a skilled cast. Photo: Rob Hood, DOC*

## **SALMON EVERYWHERE**

**Guest Commentary by Rex N Gibson**

Copied from the NZ federation of Freshwater Anglers website: <https://nzffa.com/>

It was like that line from the Ancient Mariner. “*There were salmon, salmon, everywhere but not a fish to catch*”. I conservatively estimate that there were a thousand salmon jostling for partners in a pool area of about 100 metres. No it was not 1996 I. It was March 2026. I have never seen such a freshwater schooling event before.



They were beautifully coloured sockeye salmon (*Onchorhynchus nerka*) and the location was just up from the mouth of the Twizel/Ohau River which empties into Lake Benmore across several braids. The sockeyes red and pink colourations are quite attractive. Other anglers assured me that there were sockeye salmon all the way up the river, including past the road bridge on State Highway 8. These fish average about one kilogram. With Lake Benmore as their ocean, rather than the Pacific Ocean, they do not reach the 4-7 kg sizes recorded for sockeyes in their American homeland. In North America they are considered a popular table fish and have bright orange flesh.

Their numbers in the Waitaki catchment have exploded over the last twenty years. Originally released in 1902 from a single release, their ancestors ran down the Ohau and Waitaki Rivers to the Pacific Ocean as fingerlings. They then returned as sizable fish to spawn in the Ohau region. Then along came the hydro dams; Waitaki (Kurow) in 1930 and the Aviemore, Benmore, Ruataniwha, etc. in the 1960s and 70s. The fish ladder built at the Waitaki dam was not successful. For decades it was believed that the sockeyes were extinct. Years later, around 1982, a remnant population was found in a tributary above Lake Ohau. Without human assistance they have subsequently made their way into Lakes Ruataniwha and Benmore surviving the turbines of the power stations. The Twizel, Ahuriri and Tekapo rivers are now major spawning locations.





Despite the sockeye resurgence, anglers rarely catch them because they feed on zooplankton, and small invertebrates like daphnia, and don't usually take a fishing lure. Fish and Game warn that It is an offence under the Conservation Act to disturb spawning salmon – you can't catch, net or spear the fish, or even walk in the river bed and trample their redds, or nests.” Central South Island F&G have published various articles about targeting sockeyes in Lake Benmore. Devising methods of capture however is still a work in progress. As they spawn much earlier in the year than trout the fishing season for sockeyes finishes at the end of February.

On my recent trip I skirted around the river delta to fish the Benmore edge and the area out from the Tekapo Mouth. Whilst blind casting I hooked a solitary sockeye on a nymph. It was quite acrobatic before I managed to get it in and release it. There were a few small schools off the Tekapo Mouth but nothing like the populations that were in the river. The rumour is that the spawning fish taste is unpleasant. Whether that is true or a myth circulated to discourage harvesting I am unsure.

The lower Twizel had excellent populations of bullies so the bullies were clearly unfazed by the sockeye invasion. There were also moderate numbers of trout around the lake edge. It is suggested in some articles that the young of the sockeye provide a great food source for Benmore's trout and salmon.

Last year I wandered the lake edge and was initially disturbed by the scores of fish carcasses I was encountering. I soon realised that they were of course sockeyes that had spawned. Unlike trout they die after the spawning act is complete. In the rivers they slowly waft around "waiting for god" for a week or so before allowing the current to take them away. Many of the spent fish have developed fungal infections on their skin giving them a technicolour appearance. In years gone by I used to observe similar sights around the mouth of the Hakataramea River when Chinook/King/Quinnat salmon spawned. It was fascinating to watch rainbow trout circulating among the spawning salmon catching any stray eggs that the salmon failed to cover. It was impossible to interest the trout in anything from my fly box when they had salmon caviar.

I recall the Principal of the local school telling me that her classes made an annual trip to observe the salmon. Sadly it is no longer a spectacle there.

F&G have published this link below of the spawning.

<https://www.youtube.com/watch?v=taOmafHGcY>



*Spent sockeyes washed out to the lake fringe*

**Rex N Gibson**

## **THE FLYMPH CONCEPT**

**By Tony Orman**

Copied from the NZ federation of Freshwater Anglers website: <https://nzffa.com/>

I once wrote an article in the “NZ Outdoor” on it way back in September 1974 on “the Flymph”.

It’s a term to describe the hatching aquatic insect halfway between a nymph and adult fly. Basically it concerns the transformation of the hatching aquatic insect from a nymph to a hatched fly. A crucial stage is that of the nymph’s penetration of the surface film – the emerging stage. It seems the insects can have difficulty in penetrating the surface film. And the trout like any thinking predator, seizes the opportunity as it senses the nymph’s temporary helplessness which can trigger the trout’s feeding o focus exclusively on this exact stage.

It’s the mid stage between a nymph and an adult fly, hence the term “flymph” which was coined by an American Jim Leisenring. Jim learned early in his fly fishing that the phenomenon of escaping, free swimming aquatic insects could be imitated by manipulating line and fly, so as to cause the fly to rise to the surface to imitate the ascending natural. It was dubbed the “Leisenring Lift.”

Jim Leisenring had a very limited education and his spelling and grammar were not up to writing a book on his theory. However a good friend Vernon S. “Pete” Hidy helped Jim to pen a most interesting book “The Art of Tying the Wet Fly” published in 1941. A later revised edition of the book titled “The Art of Tying the Wet Fly and Fishing the Flymph” was co-authored by the two and published in 1971.



*Jim Leisenring*

## **About Pete**

Pete was a fly-fishing editor, writer, photographer, conservationist and innovative fly tier. He founded the Flyfisher's Club of Oregon, coined the word flymph, and campaigned tirelessly for James E. Leisenring's place in the fly-fishing world.

Pete Hidy had an admirable approach to his fly fishing never wavering from the idea that fly fishing was to be pursued for pleasure and that trout streams were "sanctuaries," where, through the art of angling, one could enjoy a "contemplative conversation with nature." He never spoke ill of any person. In contrast to those anglers who measured their pleasure by the number and size of fish caught – the numbers game I call it – Pete Hidy crafted the Fisherman's Law which was "Fishermen may find unexpected pleasures more enjoyable than the ones they seek."

It was echoing the philosophy of famous American conservationist Henry David Thoreau (1817 – 1862) who put it succinctly when he wrote "Many men go fishing all of their lives without knowing that it is not fish they are after."

But back to the flymph. It's particularly applicable to the dusk time rise of trout, a most uncertain event today but that's another story relating to the declining ecosystem of rivers. During evening it can be difficult to discern whether the trout is taking nymph or dry fly, or the intermediate stage of flymph.

A flymph is a hatching insect and may be mayfly, caddisfly, midge or stonefly that according to Pete Hidy is in the stage of metamorphosis "changing from wingless nymphs to flies with wings". These flies can be fished with "across and down" – a technique in which the current naturally swings and raises the fly towards the surface in front of a rising fish – although it can be fished "blind."

The current causes the soft hackle and body materials to simulate "life" The attraction to the trout is that the flies not only look natural but behave naturally with movement – they have the appearance of life. Hence the use of soft hackles is important in a flymph. Jim Leisenring seemed to use traditional little wet flies such as Hares Ear, Iron Blue, Tups and other US patterns but tied with only a hackle, i.e. no wing. Soft feathers such as hen, partridge, grouse, starling, woodcock, or quail are used.

## **Jim's Method**

Ed Engle in "Freewheeling Tactics and Alternative Techniques for the Difficulty Days" (Stackpole Books) says Jim Leisenring fished his "lift" technique to visible trout, fishing upstream, just as today's nymph anglers fish in the Frank Sawyer method. "He needed a stretch of water about fifteen feet or longer that was about two or three feet deep and he

needed to be able to spot a trout in that water. Once these conditions were met, Leisenring positioned himself so that he could cast an unweighted nymph upstream and across from the trout. The fly had to cast far enough upstream to allow it to sink to the bottom before it travelled downstream to the trout. The key technique was to allow little or no slack in the fly line or leader, but not enough tension to alter the natural drift of the fly. As the fly drifted downstream, Lessening followed it with the rod tip to maintain the delicate no slack/no tension ratio until it was about four feet or so upstream of the trout, at which point he stopped the rod. Since there was little or no slack in the line and leader when the rod was checked, the current would slowly lift the fly towards the surface, creating the illusion of an actively swimming or emerging nymph. It was a deadly technique especially at the beginning of a hatch.]”

The UK’s father of nymph fishing Frank Sawyer developed a similar technique on English chalk streams (spring creeks). Frank Sawyer’s technique differed slightly in that he would actually lift his rod to manipulate the fly called “the induced take.”



*A typical Leisenring wet fly. Soft hackle and sparsely tied.*

## FISHING FUNNIES



"No, I don't think your parents are responsible.  
I think the fish kicked your butt and you  
lost it."

---

## CHANGES TO CONTACT DETAILS

Committee members organising club trips and similar events are finding that the phone and email information that we hold for some members has become out of date. If you have changed your address, landline number, mobile number or email address in the last year or so and have not passed the new details on to NSFF, could you please advise Barrie Barnes by email, his email address is [barrie@flyfishinginxs.kiwi](mailto:barrie@flyfishinginxs.kiwi) .

## **FISHING BUDDIES SOUGHT**

The intention is to display a list of names of Club Members that are keen on finding a 'buddy' to go fishing with, either on a regular basis or just for a day. In essence it's a fly-fishing dating service...

<b>Name</b>	<b>Availability</b>	<b>Contact Details</b>
Ron Blair	Anytime, has a 14.4 Marco with 60hp etc Evenrude for serious fishing Salt or Fresh	home 09 834 8841 mobile 0275 006 336 <a href="mailto:ron.blair@xtra.co.nz">ron.blair@xtra.co.nz</a>
Graham Carter	Lives in Hamilton, keen on weekday / mid-week trips.	021 026 00437 07 855 1833
Lloyd Altham	Has 12' Pontoon boat /15 HP Honda. Available most time, but prefer weekdays.	Mob. 021 0295 9167 Home 09 420 3120 <a href="mailto:email-lloyd@skysupply.co.nz">email-lloyd@skysupply.co.nz</a>
Gary Bolstad	Keen to get out Stream, Lake or even Saltwater fly-fishing. Has both Fish & Game and Taupo season licences so keen to go almost anywhere. Retired so free to go most of the time.	Mobile 022 379 3070 <a href="mailto:gd.bolstad@gmail.com">gd.bolstad@gmail.com</a>
Derek Robinson	Retired available most times keen to do Waikato streams and most other things.	Ph 4437311 Mob: 0212 595 371 <a href="mailto:pamanddek@outlook.com">pamanddek@outlook.com</a>

## **BROWN TROUT TROPHY" COMPETITION RULES**

Winning fish will be determined by weight.  
Verification by partner where possible and/or by photograph.  
Details to be provided to any committee member.  
Competition period April 1<sup>st</sup> to March 31<sup>st</sup> . Prize awarded at AGM in April.  
Winner's name and weight of fish to be published in May club newsletter.

## **NSFF CLUB SALT WATER FLY FISHING COMPETITION RULES**

The "essence" of the competition is to encourage club member participation and in the process, to award a winner's trophy to the individual who catches the greatest number of salt water species. It will run from 1<sup>st</sup> April in one year to 31<sup>st</sup> March in the next year with the trophy awarded at the following AGM. For the full rules please refer to the Club Website [www.nsf.org.nz](http://www.nsf.org.nz)

(Opinions expressed in this Newsletter are those of the individual contributors and not necessarily those of North Shore Flyfishers Incorporated)

## **MEMBERS FEEDBACK**

We, your committee, are always trying to give you what you want.

## **But are we??**

In order for us to do our job properly we need to have your feedback, positive or negative. For example, have you been on a club fishing trip? Did you enjoy yourself? What would you change, if anything? Club nights – what would you like to see more of? Less of? In short, talk to us.

The contact details of all your committee members are listed at the end of every newsletter. So if you have something on your mind let us know.

Thank you - Your committee

## **NSFF CLUB MERCHANDISE**

Cap – \$15.00 Inclusive of GST  
Green or Beige, one size fits all, with embroidered badge.  
Embroidered Cloth Badge - \$7.50 Inclusive of GST  
Brushed Brass Metal Pin Badge - \$12.50 Inclusive of GST

If anyone is interested in purchasing these products please place an order at Club Nights.

---

**Meetings held the 3<sup>rd</sup> Wednesday of each month at 7.30pm:**  
Birkenhead RSA, Recreation Drive, Birkenhead, North Shore City

---

## **NORTH SHORE FLYFISHERS EXECUTIVE**

**Club Patron** – Dave McLellan

**President** - Dave Symes           486-6257 Takapuna

[president@nsff.org.nz](mailto:president@nsff.org.nz)

**Secretary** - Mike Martindale 020 445 4337 Takapuna

[secretary@nsff.org.nz](mailto:secretary@nsff.org.nz)

**Treasurer** - Barrie Barnes   021 925 006 Glenfield

[treasurer@nsff.org.nz](mailto:treasurer@nsff.org.nz)

**Magazine** - Duncan Frew    021 648 956 Torbay

[iconpromote@gmail.com](mailto:iconpromote@gmail.com)

**Committee** – Allen French   021 1018 838 Birkdale

[a\\_bfrench@hotmail.com](mailto:a_bfrench@hotmail.com)

**Members**   Maurice Parlane 021 650 692 Northcote

[maurice.p@newwayz.co.nz](mailto:maurice.p@newwayz.co.nz)

Neil Smit 021 274 5625 West Harbour

[neil.smit@sew-eurodrive.co.nz](mailto:neil.smit@sew-eurodrive.co.nz)

Andrew Todd – 021 124 8004 Takapuna

[andrewbtodd@hotmail.com](mailto:andrewbtodd@hotmail.com)

**North Shore Flyfishers Incorporated**